

**SHOW  
FLOOR  
PLAN  
INSIDE**

SPONSORED BY:

**DURAKOOL®**



# **iVT EXPO**

**JUNE 10 & 11, 2026 KÖLN MESSE, GERMANY**

## **SHOWGUIDE & CONFERENCE PROGRAM**

**USEFUL  
INFORMATION**

**CONFERENCE  
PROGRAM**

**SHOW  
LAYOUT**

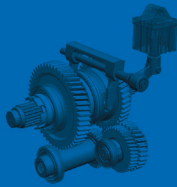
**iVT LIVE  
ZONE**

**EXHIBITOR  
LISTINGS**

[www.ivtexpo.com](http://www.ivtexpo.com) / [#iVTExpo](https://twitter.com/iVTExpo)



# Not just gearboxes, but solutions.



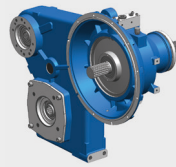
Please visit us:  
Stand No. 3060

## Our gearboxes are always the best choice

A high level of vertical integration, comprehensive know-how and a strong awareness of quality – all this forms the basis for our high-quality gearbox solutions, which we have been designing and manufacturing in the Emsland region (Northwest Germany) for more than 60 years. With more than 280 employees, we manufacture more than 800 different types of gearboxes every year. Most of them are customised solutions.

Renowned customers from a wide range of industries rely on us: as a reliable supplier and long-term development partner who understands individual requirements and creates real added value every time with customised solutions.

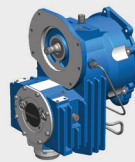
## Our strength: special gearboxes



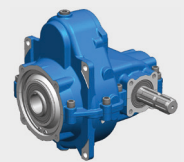
Spur gearboxes



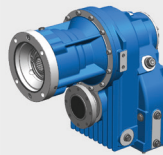
Bevel gearboxes



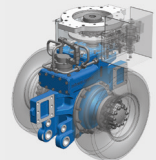
Bevel-spur gearboxes



Planetary gearboxes



Speed-change gearboxes



Axle gears

## SPONSORS

Industrial Vehicle Technology Expo would like to thank its sponsors:

### HEADLINE SPONSOR



JOHN DEERE



### GET INVOLVED ONLINE FOLLOW OUR SOCIAL CHANNELS!

Facebook: Industrial Vehicle Technology Expo

LinkedIn: iVT Expo

We'll be keeping readers up to date on breaking news, and will have regular updates about the event on both of our LinkedIn pages and on Facebook. Use the event hashtag to join in the conversation - #iVTExpo

4

### Useful information

From the wi-fi code to where to find the organizer's office

7

### Who to see

A-Z of exhibiting companies

11

### Exhibitor listings

Discover who you can meet and what's on show

20

### Show layout

Plan your way around the expo

28

### iVT Live Zone

Interactive content stage located right on the expo floor

30

### Conference program

Full conference program tracks

40

### Emergency exit procedure

### EXHIBITION OPENING HOURS

WEDNESDAY, JUNE 10

10:00 - 17:00

\*Drinks reception from 16:30

THURSDAY, JUNE 11

10:00 - 17:00

### CONFERENCE OPENING HOURS

Wednesday 09:20 - 16:45

Thursday 09:30 - 16:55

SCAN THE QR CODE TO  
DOWNLOAD THE FREE  
SHOWGUIDE APP NOW!



### Organized by

**UKi Media & Events,**  
Parsonage House,  
Parsonage Square,  
Dorking, RH4 1UP, UK

Tel: +44 1306 743744

Email: [ivt@ukimediaevents.com](mailto:ivt@ukimediaevents.com)

Web: [www.ukimediaevents.com](http://www.ukimediaevents.com)



Managing director, UKi Media & Events:  
Colette Tebbutt

Portfolio director - Roz Guarnori, event director - Ram Seira, sales manager - Richard de Courcy

Conference director:  
Apoorv Kumar

Exhibition operations manager:  
Cassie Jones

# WELCOME TO iVT EXPO 2026!

**O**n behalf of the entire team, welcome to iVT Expo 2026 – the industry’s premier platform for showcasing the next generation of industrial vehicle technology.

We are delighted to have you join us in Cologne for two action-packed days of innovation, collaboration and discovery. This year’s expo features a dynamic line-up of exhibitors from across the globe, all presenting cutting-edge components, materials and technologies driving the evolution of off-highway machinery. With more than 50 exhibitors making their iVT Expo Europe debut, there are even more fresh ideas, technologies and perspectives on this year’s exhibition floor.

Whether you’re here to explore advances in electrification, autonomy, hydraulics, powertrains, or smart control systems, iVT Expo offers unparalleled access to the ideas and solutions shaping the future.

Don’t forget to head over to the iVT Live Zone each day to hear from industry experts as they discuss ideas, spark key industry debates and deliver engaging discussions.

If you haven’t already, you can upgrade to a delegate pass to gain access to the Off-Highway Evolution Conference. It is running

alongside the exhibition and will explore the key challenges and opportunities in autonomy, digitalization, electrification and alternative fuels.

Visitors can make the most of their time here by networking with peers, attending live demonstrations and discovering the latest products on the show floor.

Be sure to download the official event app to plan your schedule, connect with exhibitors and book meetings in advance.

Thank you for being part of iVT Expo 2026. We hope you leave inspired, informed and ready to take your business into the future.

Enjoy the show!

The iVT Expo team

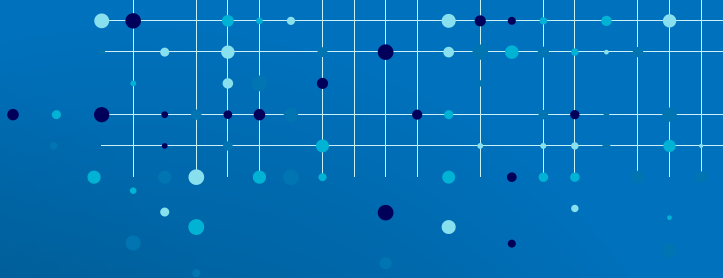


Richard de Courcy,  
Sales Manager,  
iVT Expo

Ram Seira,  
Event Director,  
iVT Expo

**SCAN THE QR CODE TO  
DOWNLOAD THE FREE  
SHOWGUIDE APP NOW!**



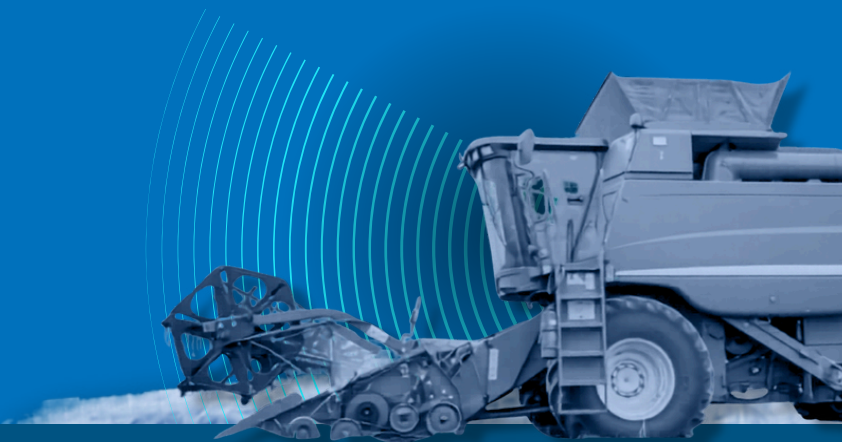


WHITEPAPER

# DATA AND IMPACT ON SAFETY IN ADAS AUTONOMY

Qualcomm

Written and reviewed by autonomy experts and **computer science PhD's** working with **Automotive Division**.



# USEFUL INFORMATION

## EXHIBITION OPENING HOURS

WEDNESDAY, JUNE 10

10:00 - 17:00

\*Drinks reception from 16:30

THURSDAY, JUNE 11

10:00 - 17:00

## CONFERENCE OPENING HOURS

Wednesday 09:20 - 16:45

Thursday 09:30 - 16:55



### VENUE ADDRESS:

Köln Messe (Entrance East)  
Messeplatz 1, 50679, Cologne,  
Germany



### ACCESSIBILITY AND RAMPS

The exhibition and conference are accessed via Entrance East, with all areas being fully accessible via escalators and lifts. For any assistance, please contact the organizer's office, any member of the organizing team or a member of the Köln Messe staff

### ORGANIZER'S OFFICE

If you need help finding your way around or locating specific exhibitors, the organizer's office is located on Booth 5065 in Hall 1

## DELEGATE DINING

Conference delegates and speakers can enjoy a variety of food options from the food court, coffee lounge and snack bar located in the hall. To receive your complimentary lunch, snacks and beverages please show your conference badge at the checkout



## BOOK YOUR BOOTH FOR 2027!

Visit the iVT Expo sales teams on Booth 5060 in Hall 1 to book your exhibition space for 2027

**Ram Seira, event director**

Email: ram.seira

@ukimediaevents.com

**Richard de Courcy, sales manager**

Email: richard.decourcy@

ukimediaevents.com

**VISIT US ON BOOTH 5060**



### WI-FI

Wi-fi for browsing and checking emails is available to all attendees in Hall 1. Use #hotspot.koelnmesse and accept the terms for free access. No password is required

### SOCIAL MEDIA

Seen something fantastic at the show that you want to share on your social feeds? Please mention iVT Expo and use the event hashtag, and we'll be sure to like and share!

**Follow us:**

@ivtexpo

**Mention us:**

#iVTExpo

## FOOD COURT & SNACK BAR

There are a number of on-site food trucks and a snack bar serving international cuisine located throughout the exhibition hall

### BUNS AND SUNS

Burgers

### CONCEPT BOWL

Chicken and falafel bowls

### CONCEPT PASTA

Pasta with different sauces and toppings

### SNACK BAR

Sandwiches and salads

### COFFEE BIKE



**SCAN THE QR CODE  
TO DOWNLOAD THE  
FREE SHOWGUIDE  
APP NOW!**



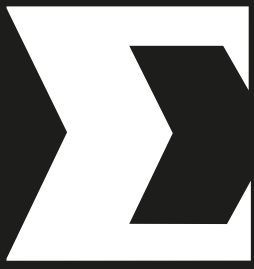
# BETTER THAN GLASS

**PCQ**  
TECHNOLOGIES™

# STAND #1010

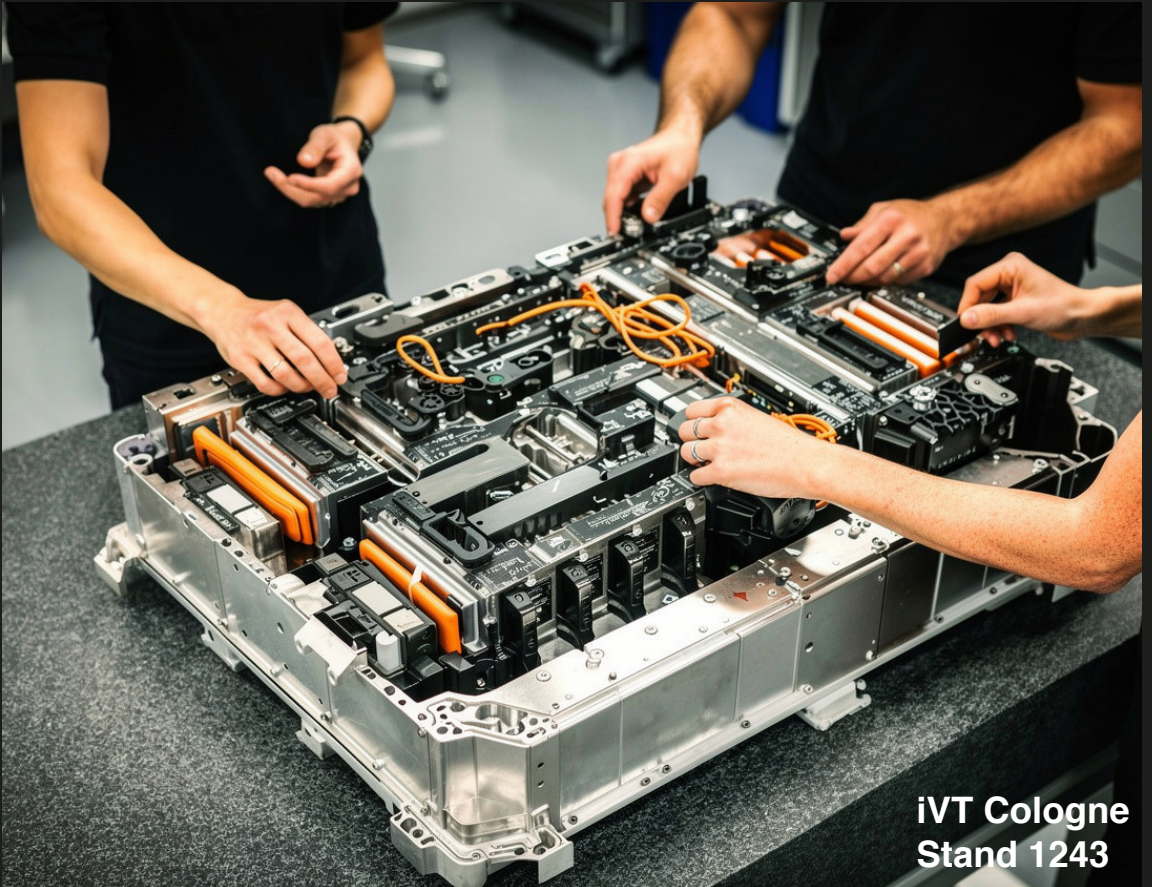


**CONTACT US:**  
JASON@PCQTECH.COM  
+44 7800 911110



# SIGMA

MANUFACTURING SOLUTIONS



iVT Cologne  
Stand 1243

## INDUSTRIALIZATION FOR ELECTRIFICATION



**Global manufacturing solutions for complex  
metal parts & assemblies.**

Casting & Forging | Precision Machining | Fabrication & Assembly  
Proto to Series | Global Manufacturing & Sourcing | End-to-End

[www.sigmammanufacturingsolutions.com](http://www.sigmammanufacturingsolutions.com)

## EXHIBITORS A-Z

ABB AG	1070	Engiro GmbH	4050
Advanced Electric Machines Ltd	1020	Enveteq d.o.o.	1000
Agro AG	7090	Epec Oy	3110
Aliant Battery	6000	Escha	7020
Alps Battery Srl	D2	EVR Motors	2150
Amot UK	1130	Exertus Oy	2230
AMRE SRL	3080	Fab 4.0 Hose SL	D3
APEM GmbH	4120	Famic Technologies	3260
Apparatebau Kirchheim-Teck GmbH	7030	Fernsteuergeräte Kurt Oelsch GmbH	5110
Assmann WSW components GmbH	6090	Flash Battery	4080
Atech Antriebstechnik GmbH	5050	Fluro-Gelenklager GmbH	1100
Atesteo GmbH & Co. KG	6065	Förarmiljö AB	6190
Aumovio Germany GmbH	5170	FSP Power Solution	D12
b-plus mobile control GmbH	7000	Gebrüder Frei	6180
Baulds	1110	Gefran Deutschland	1140
Be-Ge Seating	6160	Graf-Syteco GmbH & Co. KG	3340
Bedia Motorentechnik GmbH & Co. KG	4130	Grayson Thermal Systems	1160
Bel	6070	Griessbach GmbH	1080
Bibus Hydraulik AG	2020	GT Joysticks	6115
Bonfiglioli SpA	4000	Guilera SA	1170
Bosch Engineering GmbH	3020	Hägele GmbH	4320
Bosch Rexroth AG	3020	Hainzl Industriesystems GmbH	5160
Calatherm	2140	Handtmann Systemtechnik GmbH & Co. KG	5140
Carsig GmbH	3200	Harting Deutschland GmbH & Co. KG	5090
Celltech Solutions Oy	3140	Hawe Hydraulik SE	4340
CETA Testsysteme GmbH	6100	HMS Technology Center GmbH	1200
Cleantron Cleantech Batteries	2275	HPI	6200
Contac Solutions AB	6110	Husco	6220
CrossControl AB	2160	Hydac International	4050
Crossware I/O GmbH	2180	HydraForce Hydraulics	3020
Curtis Instruments	4100	Hydro Leduc	4350
CVEP GmbH	4060	Hyper motive	1120
Danfoss Power Solutions Aps	3000	ifm electronic GmbH	4250
Danitech AS	1241	In-Tec Bensheim	7100
DC Airco, thermal management and HVAC solutions	1030	InMach Intelligente Maschinen GmbH	1230
DDM Hopt+Schuler	1040	Inro Elektrotechnik	2260
Deep Sea Electronics	4160	Inter Control - Hermann Köhler Elektrik GmbH & Co. <b>SPONSOR</b>	3320
Deutronic Elektronik GmbH	4200	italpres Eredi Zani Bruno snc	5045
DMC GmbH	3140	ITK Engineering <b>SPONSOR</b>	3020
driveblocks GmbH	D6	ITT Cannon GmbH	3160
dSPACE	1180	IVT – Industrial Vehicle Technology International	1245
E-T-A Elektrotechnische Apparate	2110	iVT Expo 2027	5060
EA0	3310	iVT Off-Highway Vehicle Technology Expo 2026	5060
Eckerle Technologies GmbH	5010	John Deere Electronics <b>SPONSOR</b>	5000
EFA	3170	Jungheinrich Norderstedt AG & Co. KG	6020
Electrified Motors	3050	Kinell	1190
Electrofit	7060	Kolektor Mobility d.o.o.	7040
Elfatek Elektronik	7150	Kreisel Electric	5000
Ellamp systems Srl	3090	KSD Technologies GmbH	7070
EmergoStar	7050	Leadrive Technology Germany GmbH	2220
Emsiso d.o.o.	1050	Lumikko	3220
Endrich Bauelemente Vertriebs GmbH	2180	Makersan	2060

Makersan	<b>2060</b>	Scania Industrial Batteries	<b>1005</b>
Maximatecc	<b>2160</b>	Schaeffler	<b>7130</b>
ME Mobil Elektronik GmbH	<b>3100</b>	Schwarz Elektromotoren GmbH	<b>6120</b>
Melegari Luigi & Figli Srl	<b>3120</b>	Settima Meccanica Srl	<b>2000</b>
Mevea Ltd	<b>1210</b>	Shijiazhuang Hanjiu Technology Co. Ltd	<b>7080</b>
Mintec Industriale Srl	<b>4020</b>	Sigma Manufacturing Solutions	<b>1243</b>
Miunske	<b>3240</b>	Siko	<b>3350</b>
Moba Mobile Automation	<b>6210</b>	siliXcon sro	<b>2295</b>
Moteg GmbH	<b>1050</b>	Solectrix	<b>4070</b>
Motion Makers GmbH	<b>2100</b>	Sonceboz SA	<b>5150</b>
Moving Magnet Technologies	<b>5150</b>	Sontheim Industrie Elektronik	<b>2080</b>
MRS Electronic GmbH & Co. KG	<b>3150</b>	Star Electronics	<b>2170</b>
Multi-Wing	<b>4140</b>	Studer Cables AG	<b>5090</b>
Neusys Technology	<b>2200</b>	STW (Sensor-Technik Wiedemann)	<b>3330</b>
Neuser Elektrotechnik GmbH	<b>2240</b>	Suncar	<b>2120</b>
NewTec <b>SPONSOR</b>		technotrans SE	<b>1250</b>
NVR	<b>2070</b>	Tianjin Santroll Electric Technology Co. Ltd	<b>5020</b>
NX Technologies	<b>3210</b>	Topcon Electronics	<b>7010</b>
OEM	<b>4170</b>	Tria Technologies GmbH	<b>D7</b>
Oesse	<b>5180</b>	TTControl GmbH	<b>4050</b>
Omni Gear	<b>6055</b>	TTI	<b>2280</b>
OMSI Trasmissioni SpA	<b>1000</b>	Twin Disc	<b>5120</b>
Owasys Advanced Wireless Devices SL	<b>1200</b>	Tyri Sweden AB	<b>5100</b>
PCQ Technologies	<b>1010</b>	TyroCharge	<b>D1</b>
PEAK-System Technik GmbH	<b>1200</b>	U-Control Srl	<b>5070</b>
Peres	<b>3300</b>	UniDrive Transmissions	<b>2210</b>
Peters Indu-Produkt GmbH	<b>6150</b>	Variohm Group	<b>3280</b>
Peterson Europe	<b>6230</b>	Varionova Srl	<b>D10</b>
Phi-Power AG	<b>D5</b>	VDO	<b>5170</b>
Poclain Hydraulics Industrie SAS	<b>1050</b>	Vector Informatik GmbH	<b>4330</b>
PohlBock GmbH	<b>3070</b>	Veethree Technologies	<b>6050</b>
Powell Electronics	<b>6080</b>	Visage Technologies	<b>1260</b>
Power Progress	<b>1220</b>	Vogel & Plötscher	<b>2090</b>
Prodrive Technologies	<b>6170</b>	Völkel Mikroelektronik	<b>1090</b>
Qexpand Technologies GmbH	<b>3230</b>	W Gessmann GmbH	<b>1265</b>
RAFI GmbH & Co. KG	<b>5130</b>	Wandfluh Hydraulics + Electronics	<b>D11</b>
Red Dot Europe Ltd	<b>2050</b>	Weber-Hydraulik GmbH	<b>D8</b>
REFUdrive GmbH	<b>3090</b>	Webtec (Europe)	<b>6060</b>
renco GmbH	<b>2290</b>	Weiss Mobiltechnik GmbH	<b>7110</b>
Rheintacho Messtechnik	<b>7120</b>	WL Gore & Associates GmbH	<b>5080</b>
Rise Robotics	<b>2210</b>	Wölfle	<b>3270</b>
Rögelberg Getriebe GmbH & Co. KG	<b>3060</b>	Würth Elektronik ICS	<b>4300</b>
Rokatec Kabelkonfektion	<b>6150</b>	XPI Germany GmbH	<b>2190</b>
Roquet Hydraulics	<b>D9</b>	Ymer Technology GmbH	<b>4320</b>
Rose Systemtechnik GmbH	<b>1240</b>	Zapi Group	<b>5050</b>
RoyPow Technology GmbH	<b>1150</b>	ZeBeyond Ltd	<b>D4</b>
RRC power solutions GmbH	<b>6125</b>		
SAB Bröckskes GmbH & Co. KG	<b>4330</b>		

**cleantron**<sup>®</sup>  
cleantech batteries

# SWAP TO MAXIMIZE PRODUCTIVITY

Portable.  
Scalable.  
Swappable.



VISIT CLEANTRON AT  
STAND N. 2275 HALL 1



Learn more on our website  
[www.cleantron.nl](http://www.cleantron.nl)



Engineered by leading European  
machinery manufacturers



Engineered and produced  
in the Netherlands

# Steer-by-Wire Safety Has Been Overengineered.

If your SbW safety strategy is **"add more electronics,"** you're adding more failure points, more cost, and more integration pain.

Husco's GenSteer™ solution uses operator energy as the fail-functional backup power source — delivering SbW safety without piling on extra hardware and enabling a compact, integrated steering architecture built for real machines and ready for what's next.



**Discover safety you  
can generate yourself.**

Stand #6220 • [Husco.com](http://Husco.com)

# HUSCO

# EXHIBITOR LISTINGS

## A

### ABB AG

**Booth: 1070**

**Web:** [global.abb/group/en](http://global.abb/group/en)

ABB is a leading technology company in electrification and automation, enabling a more sustainable and resource-efficient future. By combining technical expertise and digitalization, ABB ensures that industries perform well while becoming more efficient, productive and sustainable to exceed their goals. ABB calls this "Engineered to Outrun."

### Advanced Electric Machines Ltd

**Booth: 1020**

**Web:** [www.advancedelectricmachines.com](http://www.advancedelectricmachines.com)

AEM designs and manufactures sustainable, high-performing electric traction motors. Its range of electric motors allow customers to go faster and travel further with a lower footprint than other motor technologies. The motors are designed to meet customer demands, from commercial vehicles and buses to road trains and trailer-driven axles.

### Agro AG

**Booth: 7090**

**Web:** [www.agro.ch/en\\_CH](http://www.agro.ch/en_CH)

Agro presents an innovative, pioneering and extensive portfolio of cable glands and accessories for the machinery, plant and equipment manufacturing industry, as well as e-mobility. The innovative EVolution EMC cable gland, developed by the manufacturer for the e-mobility sector, offers 360° shielding.

### Aliant Battery

**Booth: 6000**

**Web:** [go-aliant.com](http://go-aliant.com)

Aliant Battery has been a lithium battery manufacturer since 2009, based in Italy. Aliant provides both custom and standard lithium batteries for any kind of industrial applications. From construction to agriculture, from lifting to marine, Aliant Battery is your partner for electrification.

### Alps Battery Srl

**Booth: D2**

**Web:** [www.alpsbattery.com](http://www.alpsbattery.com)

Alps develops, engineers and produces lithium batteries in northern Italy, in the middle of the European Alps. The company's products are state-of-the-art and undergo a long development period to ensure optimal functionality and outstanding quality. Alps doesn't sell just products but complete solutions including the best after-sales service.

### Amot UK

**Booth: 1130**

**Web:** [www.amot.com](http://www.amot.com)

Amot supports OEMs across off-highway and mobile equipment with robust flow control and actuation solutions. At iVT Expo, discover how the EH Series electric actuators deliver reliable performance in harsh environments, from extreme temperatures to high vibration. Designed for durability, fast response and seamless integration into demanding, real-world applications.

### AMRE Srl

**Booth: 3080**

**Web:** [www.amre.it](http://www.amre.it)

Since 1954, AMRE has been specialized in the production of AC-DC-IPM electric motors and distribution of vectorial inverters. The company designs compact, high-performance motors, combining advanced engineering with sustainable solutions. Its strengths include flexible production, technical support and a strong commitment to quality and product customization.

### APEM GmbH

**Booth: 4120**

**Web:** [www.apem.com](http://www.apem.com)

APEM develops innovative human-machine interface solutions for specialty vehicles, industrial applications, and off-highway applications. At iVT Expo, the company will showcase rugged joysticks, switches and intelligent control concepts such as the programmable Synapse joystick. These solutions enhance the safety, ergonomics, and efficiency of modern vehicle control systems under demanding operating conditions.

### Apparatebau Kirchheim-Teck GmbH

**Booth: 7030**

**Web:** [www.ak-teck.de](http://www.ak-teck.de)

AK is known for high-quality products. The product range includes certified plug-in connections, high-current plug-in connections, ADR cable junction boxes, modular trailer cabling, cable assemblies and overmolding, fuse housings and central electrics and cable connectors, as well as external start points, pushbuttons, diode and resistance modules and high-voltage applications for customer-specific complete solutions.

### Assmann WSW components GmbH

**Booth: 6090**

**Web:** [www.assmann-wsw.com](http://www.assmann-wsw.com)

The Assmann WSW Group is well known as a global system provider for standard and customer-tailored connectors, cable assemblies, heat sinks and assembly services. The Group has more than 50 years of experience in the electromechanical and thermal management markets.

### Atech Antriebstechnik GmbH

**Booth: 5050**

**Web:** [www.atech-antriebstechnik.de](http://www.atech-antriebstechnik.de)

Atech Antriebstechnik and Zapi Group are showcasing smart electrification at iVT, combining engineering expertise, system integration and high-voltage solutions to enable efficient, sustainable off-highway vehicle performance.

### Atesteo GmbH & Co. KG

**Booth: 6065**

**Web:** [www.atesteo.com](http://www.atesteo.com)

Atesteo supports you with reliable drivetrain testing on the test bench, test track, or road during the development of new transmissions. The company's range of drivetrain testing services includes NVH measurements and brake tests along with testing the entire vehicle on the dynamometer and during road trials.

### Aumovio Germany GmbH

**Booth: 5170**

**Web:** [www.aumovio.com/en.html](http://www.aumovio.com/en.html)

With its established VDO brand, Aumovio is a global leader in electronics and telematics for passenger cars, commercial and off-highway vehicles. Its portfolio spans smart tachographs, telematics, fleet platforms, trusted data, charging solutions and vehicle technologies that improve efficiency, compliance, safety, comfort and transparency for modern fleet operations worldwide today.

## B

### b-plus mobile control GmbH

**Booth: 7000**

**Web:** [www.b-plus.com/de/home](http://www.b-plus.com/de/home)

b-plus is a long-standing expert in the field of mobile applications, from trucks to mobile machines. In addition to development services, it offers its own control hardware and proven control and display components from established manufacturers. A specialist in ISObus systems, b-plus supports you with tailored, futureproof solutions.

**Baulds****Booth: 1110****Web:** [www.baulds.nl](http://www.baulds.nl)

Baulds understands that technology is constantly changing and companies need smart and efficient solutions to stay competitive. It provides clients with complete peace of mind, so they can rely on the company's expertise in embedded technologies to take their products and services to the next level.

**Be-Ge Seating****Booth: 6160****Web:** [seating.be-ge.com](http://seating.be-ge.com)

Be-Ge Seating develops, manufactures, markets and sells adjustable driver seats for commercial vehicles, construction and forestry machines, forklifts, buses, railway vehicles, passenger seats for light commercial vehicles, and office and 24-hr chairs. The Be-Ge Seating motto, 'Seats for life', permeates everything the company does. Be-Ge focuses uncompromisingly on safety, quality, ergonomics and comfort.

**Bedia Motorentechnik GmbH & Co. KG****Booth: 4130****Web:** [www.bedia.com](http://www.bedia.com)

A high-performance and innovative company, Bedia develops, produces and distributes well-thought-out solutions for level and temperature monitoring. Since 1986, Bedia Motorentechnik has been a valued partner of numerous manufacturers of construction and agricultural machinery, engines, utility vehicles, generator sets and compressors.

**Bel****Booth: 6070****Web:** [www.belfuse.com](http://www.belfuse.com)

Visit the booth to discover what Bel can offer.

**Bibus Hydraulik AG****Booth: 2020****Web:** [hydraulics.bibus.com/ch-de](http://hydraulics.bibus.com/ch-de)

Bibus is your system integrator for mobile machinery and industrial hydraulics. It develops customized drive solutions using any technology, whether hydraulic, hybrid, or electric. Bibus develops efficient systems through engineering, electrification and its proprietary control software. From design to commissioning: everything under one roof. Supporting your success.

**Bonfiglioli SpA****Booth: 4000****Web:** [www.bonfiglioli.com](http://www.bonfiglioli.com)

Bonfiglioli is a worldwide designer, manufacturer and distributor of a complete range of gearmotors, drive systems, planetary gearboxes and inverters, which satisfy the most challenging and demanding needs in industrial automation, mobile machinery and renewable energy.

**Bosch Engineering GmbH****Booth: 3020****Web:** Your engineering partner | Bosch Engineering

Bosch Engineering GmbH, a subsidiary of Robert Bosch GmbH, is a development partner for future mobility. It specializes in adapting proven Bosch series technology to create custom electronic systems for a wide range of vehicles, focusing on powertrain, perception, safety and E/E systems.

**Bosch Rexroth AG****Booth: 3020****Web:** [www.boschrexroth.com/mobile-solutions](http://www.boschrexroth.com/mobile-solutions)

As one of the world's leading suppliers of drive and control technologies, Bosch Rexroth ensures efficient, powerful and safe movement in machines and systems. The company bundles global application experience in mobile, industrial and factory automation, offering hydraulics, electric drive and control, gear, linear motion, assembly technology, software and IoT.

**C****Calatherm****Booth: 2140****Web:** [www.calatherm.com](http://www.calatherm.com)

Calatherm is a bespoke thermal management solutions specialist. Established in 1939, it has more than eight decades of experience in engineering, designing and manufacturing custom thermal management systems. Combining innovation with a solutions-focused approach, Calatherm supports businesses in both on-highway and off-highway industries with bespoke thermal systems.

**Carsig GmbH****Booth: 3200****Web:** [www.carsig.com](http://www.carsig.com)

Carsig develops and manufactures electronic solutions for vehicle electronics, from concept and prototyping to series production. Its portfolio includes control units, relays, timers, flashers, LED controllers and customized assemblies for passenger, commercial, agricultural, construction and special vehicles, with a strong focus on flexible, customer-specific engineering solutions.

**Celltech Solutions Oy****Booth: 3140****Web:** [celltechsolutions.fi](http://celltechsolutions.fi)

Celltech Solutions designs and manufactures advanced battery systems for industrial vehicles and machinery. With in-house R&D and production in Finland, it delivers scalable, application-specific solutions using LFP, LTO and NMC chemistries. Backed by ISO certifications and EcoVadis Gold, Celltech ensures safe, efficient and reliable performance in demanding industrial environments globally.

**CETA Testsysteme GmbH****Booth: 6100****Web:** [www.cetatest.com/startseite](http://www.cetatest.com/startseite)

CETA is a manufacturer of physical test devices – Made in Germany – for industrial leak testing and flow measurements in the production line. CETA has more than 35 years of experience, longstanding excellent creditworthiness and international representation, as well as several thousands of test devices worldwide.

**Cleantron Cleantech Batteries****Booth: 2275****Web:** [www.cleantron.nl](http://www.cleantron.nl)

Cleantron develops and manufactures lithium-ion battery modules and systems for off-highway, industrial and mobility applications. It designs standard and tailored solutions for low- and high-voltage use. Engineered and produced in the Netherlands, Cleantron batteries combine in-house BMS technology with advanced thermal management. For enquiries, please contact [maurice.vangiezen@cleantron.nl](mailto:maurice.vangiezen@cleantron.nl).

**Contact Solutions AB****Booth: 6110****Web:** [www.contact.se](http://www.contact.se)

Contact delivers cost-effective customized cable solutions for complex challenges. The portfolio includes molded cables, harnesses, connectors, panels and electromechanical assemblies. With facilities in Sweden, Germany, Romania and China and in-house production, Contact supports small to large volumes with tailored, high-quality solutions. That's the Contact solution.

**CrossControl AB****Booth: 2160****Web:** [www.crosscontrol.com](http://www.crosscontrol.com)

CrossControl supports OEMs and system suppliers in making industrial vehicles smarter, safer and more productive. It offers a platform for machine intelligence that includes a wide portfolio of hardware, software and services. CrossControl supplies equipment to a number of industries including construction, agriculture, mining and material handling.

**Crossware I/O GmbH****Booth: 2180****Web:** [www.crossware.io](http://www.crossware.io)

Crossware I/O delivers high-performance embedded software for industrial and off-highway vehicles, specializing in HMI, middleware and connectivity. From Qt-based interfaces to WebRTC-enabled remote operation, the company enables scalable, hardware-optimized solutions across MCUs, Linux and Android platforms, helping OEMs accelerate development, enhance user experience and unlock next-generation vehicle capabilities in demanding environments.



# Intelligent Control Technology Drives Safe, Efficient Stone Crushing Operations

To find out more please visit:  
[deepseaelectronics.com](http://deepseaelectronics.com)



**DSEM810**  
10" Programmable Display  
(Non-Keyed / Keyed Variants)

Stone crushers are essential in quarry and construction environments, forming the backbone of material processing operations. They break down rocks into consistent, usable aggregates required for a wide range of infrastructure projects. By enabling high-throughput production while maintaining material quality, stone crushers help maximise operational efficiency, reduce handling time, and keep site operations running safely and economically under demanding conditions.

The **DSEM810** programmable display provides a powerful and flexible control interface for stone crusher applications. Designed for harsh environments, it enables clear monitoring of machine performance, load conditions, and system diagnostics. With robust CAN connectivity and a configurable HMI platform, the **DSEM810** supports precise control, improved uptime, and a consistent operator experience across complex crushing and screening systems.



**Curtis Instruments****Booth: 4100****Web:** [www.curtisinstruments.com](http://www.curtisinstruments.com)

Curtis Instruments, a Parker Hannifin company, is a global leader in advanced electronic control systems for electric and hybrid vehicles. With over 65 years of engineering expertise, it delivers innovative motor control, power conversion and human-machine interface (HMI) solutions that enable the electrification of off-highway and specialty vehicles.

**CVEP GmbH****Booth: 4060****Web:** [cvep.de/en\\_gb](http://cvep.de/en_gb)

CVEP manufactures control systems, ECUs and subassemblies. With intelligent PCB solutions, HV boxes and PDUs utilizing press-fit technology, CVEP is a leading provider in the market. Innovative development and its own manufacturing base allow individual customer requirements and even the most challenging projects to be implemented. CVEP also offers outstanding expertise in the field of e-mobility.

**D****Danfoss Power Solutions Aps****Booth: 3000****Web:** [www.danfoss.com](http://www.danfoss.com)

Futureproof your machines with Danfoss Power Solutions, your expert for advanced electrification, intuitive HMI, flexible PLUS+1 software and precision steering. With integrated cybersecurity, Danfoss protects your technology from threats. Let's build the next generation of high-performance vehicles together.

**Danitech AS****Booth: 1241****Web:** [danitech.com/en/home](http://danitech.com/en/home)

Visit the booth to discover what Danitech can offer.

**DC Airco, thermal management and HVAC solutions****Booth: 1030****Web:** [www.dcairo.com](http://www.dcairo.com)

DC Airco delivers advanced thermal management solutions for e-mobility and energy storage systems. Specializing in efficient cooling and heating technologies, the company enhances battery performance, safety and lifespan. Compact, high-performance systems support electric vehicles and stationary storage, enabling reliable operation, energy efficiency and sustainable innovation across demanding applications.

**DDM Hopt+Schuler****Booth: 1040****Web:** [www.hopt-schuler.com](http://www.hopt-schuler.com)

DDM Hopt+Schuler, a family-owned business with 50+ years of experience, develops and produces ticket systems, switches and card readers in Rottweil, Germany. Its innovative solutions ensure efficiency and a great user experience, backed by global expertise. Visit the booth to benefit from expert knowledge and tailored solutions.

**Deep Sea Electronics****Booth: 4160****Web:** [www.deepseaelectronics.com](http://www.deepseaelectronics.com)

DSE specializes in designing and manufacturing advanced programmable controllers and displays for off-highway vehicles and mobile machinery. It develops a leading range of hardware and software platforms that allow original equipment manufacturers and system integrators to create bespoke control systems that are powerful, robust and reliable.

**Deutronic Elektronik GmbH****Booth: 4200****Web:** [www.deutronic.com](http://www.deutronic.com)

Deutronic, an expert regarding the development and production of B2B power electronics, has a broad knowledge bundled in the logistics and transportation business units. A wide range of DC-DC and high-voltage DC-DC converters guarantees the perfect solution for every application. Added value instead of just selling products.

**DMC GmbH****Booth: 3140****Web:** [www.dmcde.de](http://www.dmcde.de)

DMC offers DC-DC converters and motor controllers. The DC-DC converters offer up to 2.5kW max output. Motor controllers are available with full autotune for IPM, PMS and AC motor technologies. These are now also available for pure- and assisted-reluctance motor technology.

**driveblocks GmbH****Booth: D6****Web:** [www.driveblocks.ai](http://www.driveblocks.ai)

driveblocks is a Munich-based software company offering autonomy and driver assistance software for off-road vehicles in agriculture, construction, mining and defense. The software enables reliable autonomous operation in complex, unstructured environments and integrates efficiently across vehicle platforms and sensor setups. Customers and partners include Claas, Bomag, DAF, Infineon, STW and Apex.AI.

**dSPACE****Booth: 1180****Web:** [www.dspace.com](http://www.dspace.com)

dSPACE is a leading provider of simulation and validation solutions worldwide for developing connected, autonomous and electrically powered vehicles. With more than 2,800 employees worldwide, dSPACE is headquartered in Paderborn, Germany; has four project centers in Germany; and serves customers through regional dSPACE companies in eight countries.

**E****E-T-A Elektrotechnische Apparate****Booth: 2110****Web:** [www.e-t-a.de](http://www.e-t-a.de)

E-T-A has been protecting electrical systems from overcurrent and short circuits for more than 75 years. Its solutions ensure that electrical power remains safe, reliable and manageable across a wide range of industries. As a global market leader, E-T-A offers a comprehensive portfolio including circuit breakers, relays, contactors and intelligent power distribution systems.

**EAO****Booth: 3310****Web:** [www.eao.com](http://www.eao.com)

EAO, a Swiss, family-owned company founded in 1947, has developed into one of the world's leading manufacturers of switches, keyboards, sophisticated control elements and complete HMI control units and HMI systems.

**Eckerle Technologies GmbH****Booth: 5010****Web:** [www.eckerle.com](http://www.eckerle.com)

Eckerle Technologies develops and manufactures precision internal gear pumps for industrial and mobile hydraulic applications. Its systems are engineered for reliable, continuous operation, stable processes and high efficiency. OEM customers worldwide rely on Eckerle's solutions where long service life, precise system integration and consistent hydraulic performance are required.

**EFA****Booth: 3170****Web:** [www.efa-controls.com](http://www.efa-controls.com)

Strongly focused on innovation, Franco-German company EFA is a benchmark equipment supplier for industrial vehicles. Electrification, collision avoidance, control command: with these three ranges, EFA offers everything needed for the manufacture of industrial vehicles, from a simple component to the design of a client's project by expert engineers.

**Electrified Motors****Booth: 3050****Web:** [www.electrified-motors.com](http://www.electrified-motors.com)

Electrified Motors is an innovator of automated motor manufacturing and electrification technology. Its interior permanent magnet electric motors have been optimized for scalable, high-volume automated production. Electrified Motors' patented and robust motor design allows it to maximize the efficiency, reliability, range and performance of vehicles in the off-highway markets.

**Electrofit****Booth: 7060****Web:** [www.electrofit.com](http://www.electrofit.com)

Electrofit supplies premium OEM electric motors, transmissions and supporting components for EV conversions and specialist vehicle builds. A division of Advanced Electronics & Logistics, it has over 30 years of automotive expertise, specializing in integrating OEM ICE and EV powertrains into bespoke applications to deliver reliable, efficient, high-performance electrification solutions.

**Elfatek Elektronik****Booth: 7150****Web:** [www.elfatek.com.tr/index/en](http://www.elfatek.com.tr/index/en)

Elfatek is an innovative manufacturer specializing in control technologies and equipment for the crane and lifting industry. Supported by its dedicated R&D center and strong engineering expertise, the company develops reliable solutions that improve safety, precision and efficiency in crane operations, delivering durable products designed for demanding industrial environments.

**Ellamp systems Srl****Booth: 3090****Web:** [www.ellampsystems.com](http://www.ellampsystems.com)

Ellamp specializes in the design and production of interior components for bus and train.

**EmergoStar****Booth: 7050****Web:** [www.emergostar.com](http://www.emergostar.com)

EmergoStar develops advanced lithium-ion battery systems in the Netherlands for industrial vehicles and mobile machinery. It designs proprietary BMS hardware and firmware, battery modules and high-voltage systems with CAN communication, functional safety features and robust IP protection. EmergoStar's solutions are modular, scalable, fully customizable and engineered for demanding industrial electrification.

**Emsiso d.o.o.****Booth: 1050****Web:** [www.emdrive-mobility.com](http://www.emdrive-mobility.com)

Emsiso is an innovative engineering and manufacturing company specializing in advanced motor control solutions for electric and hybrid vehicles. It delivers high-performance, reliable, application-specific products for off-highway, construction, agricultural and industrial markets. As part of Poclairn Hydraulics, it supports OEMs in accelerating electrification.

**Endrich Bauelemente Vertriebs GmbH****Booth: 2180****Web:** [www.endrich.com](http://www.endrich.com)

Visit the booth to discover what Endrich can offer.

**Engiro GmbH****Booth: 4050****Web:** [www.engiro.de/home](http://www.engiro.de/home)

Visit the booth to discover what Engiro can offer.

**Enveteq d.o.o.****Booth: 1000****Web:** [www.enveteq.com](http://www.enveteq.com)

Enveteq is a Zagreb-based product development company founded in 2017, specializing in powertrain design and custom engineering for electric, hybrid and special-purpose vehicles. At iVT Expo 2026, Enveteq presents the EWOP960 – a multicircuit modular electric pump combining lubrication, actuator hydraulics and thermal management in one compact, all-metal unit.

**Epec****Booth: 3110****Web:** [www.epec.fi](http://www.epec.fi)

Epec is a system supplier specializing in advanced electrics/electronics for efficient, safe and connected non-road mobile machines (NRMM) and commercial vehicles. It is a manufacturing company with extensive experience in control systems, customized products, electric/hybrid vehicle systems and assistance and autonomous systems.

**Escha****Booth: 7020****Web:** [www.escha.net/en](http://www.escha.net/en)

The Escha Group represents innovative connector and housing technology at the highest level. It develops robust, dust- and waterproof solutions that withstand even the most demanding applications. Whether it's a customized special solution or a modified standard component, Escha connects what belongs together.

**EVR Motors****Booth: 2150****Web:** [evr-motors.com](http://evr-motors.com)

Experience superior radial flux technology with EVR Motors. The proprietary TS-RFPM technology redefines performance, significantly reducing weight, volume and cost without compromising power or efficiency. Offering a versatile range from 5kW to 200kW (48V-800V), EVR delivers high-efficiency, compact e-mobility solutions worldwide, primarily operating through a flexible licensing model.

**Exertus Oy****Booth: 2230****Web:** [exertus.fi](http://exertus.fi)

Exertus helps businesses grow through data-driven marketing, e-commerce and digital customer experience solutions. It combines strategic consulting, technology expertise and hands-on execution to connect sales, marketing and analytics. The team supports clients internationally in achieving measurable results. Visit the booth to explore ways to accelerate growth and strengthen customer engagement.

**F****Fab 4.0 Hose SL****Booth: D3****Web:** [www.fab4hose.com](http://www.fab4hose.com)

Visit the booth to discover what Fab 4.0 Hose can offer.

**Famic Technologies****Booth: 3260****Web:** [www.famictech.com](http://www.famictech.com)

Famic Technologies develops engineering software for industrial and off-highway vehicle applications. Its flagship product, Automation Studio, supports design, simulation, validation and documentation of hydraulic, pneumatic, electrical, PLC, robotics, HMI and control systems, helping teams improve productivity, reduce errors and accelerate machine development. Create, analyze, troubleshoot and validate multitechnology systems!

**Fernsteuergeräte Kurt Oelsch GmbH****Booth: 5110****Web:** [www.fsg-sensors.de](http://www.fsg-sensors.de)

For 80 years, FSG Fernsteuergeräte has been one of the leading and most innovative sensor manufacturers. With its expertise, the company is shaping the field of angle, tilt, linear and position sensors, offering a broad portfolio ranging from tilt sensors and cable-pull transducers to industrial joysticks, foot pedals and wind sensors.

**Flash Battery****Booth: 4080****Web:** [www.flashbattery.tech](http://www.flashbattery.tech)

Flash Battery designs and manufactures lithium batteries for industrial machines and electric vehicles. Since 2012, Flash Battery has designed and produced more than 30,000 lithium battery packs, studied and customized over 800 different battery models and provided more than 550MWh in several applications, including industrial machines and electric vehicles.

**Fluro-Gelenklager GmbH****Booth: 1100****Web:** [www.fluro.de](http://www.fluro.de)

Fluro is a worldwide well-established manufacturer of high-class rod ends and spherical plain bearings based in Germany. Fluro products are used in virtually every conceivable movement application across all areas of industrial and off-highway vehicle technologies. Fluro's customers benefit from expertise in stainless, media-resistant and high-temperature variants.

**Förarmiljö AB****Booth: 6190****Web:** [www.forarmiljo.se](http://www.forarmiljo.se)

Developing and manufacturing solutions for driver seats and machine cabins since 1987, Förarmiljö is specialized in armrests, seat posts, turntables and sunshades for heavy-duty machinery and industrial vehicles. It creates customized kits and ergonomic solutions for machine manufacturers worldwide.

**FSP Power Solution****Booth: D12****Web:** [www.fsp-ps.de](http://www.fsp-ps.de)

Founded in 1993, FSP Group is a global power supply leader delivering high-efficiency, sustainable solutions under its 3S promise: safe, stable, saving.

**G****Gebrüder Frei****Booth: 6180**

Discover Gebrüder Frei's latest innovations in the field of operating elements for mobile machines. Dynamic Keypad: a few buttons – infinite possibilities. Vision Wheel: the ideal addition to the Dynamic Keypad.

**Gefran Deutschland****Booth: 1140****Web:** [www.gefran.com/industrial-sectors/mobile-machines](http://www.gefran.com/industrial-sectors/mobile-machines)

Gefran Deutschland has it all: mobile working machines, sensors, SIL2, CANopen, position, angle, tilt, pressure, linear measurement, position sensors, tilt sensors, pressure sensors, safety, functional safety, robustness, precision, reliability, off-highway, hydraulics, automation, control,

signal processing, industrial grade, OEM. Application expertise: mobile hydraulics, fieldbus, industrial sensors, mechanical engineering, outdoor use. Shock resistant, vibration resistant, temperature resistant, certified, efficiency, performance, system integration, and measurement solutions.

**Graf-Syteco GmbH & Co. KG****Booth: 3340****Web:** [www.graf-syteco.de](http://www.graf-syteco.de)

Graf-Syteco is specialized in modular system integration concepts that facilitate the control of complex systems and machines. It offers a comprehensive range of products and services tailored for the mobile machinery industry. As a service, it focuses on integrating and optimizing technological solutions.

**Grayson Thermal Systems****Booth: 1160****Web:** [www.grayson.com](http://www.grayson.com)

Grayson designs, tests, manufactures, supplies and services innovative thermal management and HVAC systems for OEMs across the world in the off-highway, special vehicles and stationary power sectors. Whether you are electrifying next-gen machines or upgrading ICE platforms, Grayson is here to make tomorrow's platform a reality with advanced thermal management.

**Griessbach GmbH****Booth: 1080****Web:** [www.griessbach-luckenwalde.de](http://www.griessbach-luckenwalde.de)

Griessbach develops and manufactures operating and control systems for construction and agricultural machinery, rail vehicles, printing machines, ships, mechanical engineering and the medicinal industry. Griessbach offers everything from product design to hardware and software solutions, quality testing and complete manufacturing. From standard to customized solutions, everything is made in Germany.

**GT Joysticks****Booth: 6115****Web:** [www.gtjoysticks.ch](http://www.gtjoysticks.ch)

As a family-run Swiss company, GT Joysticks has been developing customized joystick solutions since 1958. The company combines mechanical innovation with modern electronics, all developed by its in-house engineering team. GT Joysticks implements projects worldwide for a wide range of industries, such as medical technology, drones, agricultural machinery and construction.

**Guilera SA****Booth: 1170****Web:** [www.guilera.com](http://www.guilera.com)

Guilera supplies OEM and Tier 1 manufacturers worldwide with premium industrial vehicle components, proudly made in Spain. Guilera's global expertise and uncompromising quality standards

make it the trusted partner for demanding applications. Ready to elevate your supply chain? Visit the booth and let's talk about what we can build.

**H****Hägele GmbH****Booth: 4320****Web:** [www.cleanfix.org](http://www.cleanfix.org)

Visit the booth to discover what Hägele can offer.

**Hainzl Industriesystems GmbH****Booth: 5160****Web:** [www.hainzl.at](http://www.hainzl.at)

With its hydraulic, mechanical and electric drives, Hainzl powers machines and vehicles. Control, lubrication and filtration technologies make the company a full-service systems provider. Throughout the development process, Hainzl supports you from the initial idea through technical design, certification and commissioning, all the way to long-term maintenance.

**Handtmann Systemtechnik GmbH & Co. KG****Booth: 5140****Web:** [handtmann-systemtechnik.com](http://handtmann-systemtechnik.com)

Handtmann is a trusted partner for advanced battery systems in automotive and off-highway applications. Since 2015, the company has been developing and series-producing high-voltage battery housings and complete traction battery systems, combining decades of lightweight construction expertise with strong system engineering, simulation, validation and state-of-the-art manufacturing technologies.

**Harting Deutschland GmbH & Co. KG****Booth: 5090****Web:** [www.harting.de](http://www.harting.de)

The Harting Technology Group is a leading global provider of industrial connectivity. Harting connectivity solutions are used to transmit data, signals and power in numerous industrial sectors. Among others, in transportation, electromobility, renewable energy production, automation and mechanical engineering.

**Hawe Hydraulik SE****Booth: 4340****Web:** [www.hawe.com](http://www.hawe.com)

Hawe Hydraulik provides efficient and compact drive and control solutions designed for high power density. With electronic control, modern interfaces and flexibility in drive types, Hawe technology fits a wide range of applications across many industries. With 2,900 employees in 24 countries, Hawe combines global strength with local presence.

# PAS High-Speed Implement BUS

## 1000Base-T1 Gb Ethernet Switch



- ◆ Three Machine Interfaces
- ◆ Supports 12V/24V
- ◆ Meets AEF HS-ISOBUS requirements
- ◆ IP67 Rated Enclosure
- ◆ Operating Temperature: -40°C to +85°C

*More technical data and schematics available on [www.powell.com](http://www.powell.com)*

- ▶ Use the latest in IEEE802.3bp technology for Single Pair Ethernet performance standards
- ▶ 1000Base-T1 Type B, 1 Gb/s up to 40M
- ▶ High-definition data sharing across many devices and suitable for many applications using IEEE 802.1
- ▶ Advantages to using a HSI GbE Switch already in development
  - ▶ Use of automotive suppliers with long life roadmaps
  - ▶ No development costs or new tooling requirements
  - ▶ Vetted and tested HSI switch is ready to be used on vehicles immediately
  - ▶ Cost advantage from economies of scale, using common materials and processes within existing volumes of another manufacturer
- ▶ Strong technical understanding and circuit reuse from existing products reduce the risk of failure.

For more information on Powell Electronics Agricultural Solutions, email [agin@powell.com](mailto:agin@powell.com)  
+1 856 241-5622 (USA) | +353 4 583 8567 (Europe)

# THE OFFICIAL EVENT APP

Download the **FREE APP** and benefit from the following features:

NETWORKING

APPOINTMENT MAKING

EXHIBITOR LIST

EVENT PROGRAM

NAVIGATION



**Download the app today and start planning your visit!**

Available on the  
**App Store**

GET IT ON  
**Google Play**



## HMS Technology Center GmbH

**Booth: 1200**

**Web:** [www.hms-networks.com](http://www.hms-networks.com)

HMS Networks enables smarter industrial vehicles through best-in-class connectivity solutions. At iVT Expo, HMS presents three complementary brands: Peak for CANbus analysis and diagnostics, Ixat for automotive gateway and testing solutions and Owasys for rugged telematics hardware – all designed to accelerate development and digitalization in off-highway applications.

## HPI

**Booth: 6200**

**Web:** [www.hpi-eu.com](http://www.hpi-eu.com)

HPI: French excellence in the design and production of hydraulic components since 1966. At this year's iVT exhibition, the company presents its latest developments: the Micro Compact Silence, an e-pump for electrohydraulic steering applications, booster function, and more...

## Husco

**Booth: 6220**

**Web:** [www.husco.com](http://www.husco.com)

Husco is a privately owned leader in hydraulic and electromechanical control systems for off-highway and automotive OEMs. Its solutions enable precision control in propulsion, steering, braking and work functions. With 80 years of innovation, Husco's success is powered by a hands-on, collaborative team culture.

## Hydac International

**Booth: 4050**

**Web:** [www.hydac.com](http://www.hydac.com)

Hydac is a group of companies with more than 10,000 employees worldwide, 50 subsidiaries and more than 500 service partners specialized in the manufacturing and sales of components and systems as well as services for the industrial fields of hydraulics/fluid technology, electronic control technology and hydrogen and alternative energy sources.

## HydraForce Hydraulics

**Booth: 3020**

**Web:** [www.hydraforce.com](http://www.hydraforce.com)

Compact Hydraulics is a business unit combining the strengths of Bosch Rexroth and HydraForce, delivering trusted expertise and proven solutions. It offers the broadest range of compact hydraulic technologies, enabling customers to build, move, feed, sustain and protect the world through high performance, smart integration and strong competitive advantage with reliable efficiency.

## Hydro Leduc

**Booth: 4350**

**Web:** [www.hydroleduc.com](http://www.hydroleduc.com)

Hydro Leduc is a French designer and manufacturer of high-quality hydraulic components, including pumps, motors, accumulators and custom hydraulic systems for mobile and industrial applications. In response to the shift toward electrification, Hydro Leduc also develops electrohydraulic systems and electrification products, such as electric power take-off (ePTO) systems and inverters.

## Hypermotive

**Booth: 1120**

**Web:** [www.hyper-motive.com](http://www.hyper-motive.com)

Hypermotive designs, manufactures and integrates electrical and hydrogen systems for all mobility, powergen and industrial sectors. Products and services cover low-volume LV/HV harnessing, electronic and electrical systems; and power conversion, distribution and control technologies. The fuel cell systems team is highly experienced in the design and integration of hydrogen technologies.

## I

## ifm electronic GmbH

**Booth: 4250**

**Web:** [www.ifm.com](http://www.ifm.com)

You never know what the next job will entail. But you can make sure that your mobile machines are ideally equipped for every challenge. This is why ifm offers a broad product portfolio specially designed for use in mobile machines: from sensors, cabling and displays to controllers.

## In-Tec Bensheim

**Booth: 7100**

**Web:** [www.in-tec.de](http://www.in-tec.de)

In-Tec Bensheim supports partners in developing and producing configurable solutions for high-voltage connections and cabling, with over 300 projects and 100k+ high-voltage cables produced. Specializing in onboard network components such as HV PDUs, In-Tec Bensheim also offers a proprietary catalog PDU in various sizes, showcasing its comprehensive expertise in the field.

## InMach Intelligente Maschinen GmbH

**Booth: 1230**

**Web:** [www.inmach.de](http://www.inmach.de)

InMach is widely recognized as an expert in autonomous work machines and robotics. Less known is its role as an OEM system supplier, enabling customer innovation and differentiation. By integrating proprietary software and electronics with high-performance partner components, InMach delivers forward-looking solutions that address the technological challenges of tomorrow.

## Inro Elektrotechnik

**Booth: 2260**

**Web:** [www.inro-et.de](http://www.inro-et.de)

Inro Elektrotechnik delivers efficient, high-performance electronics for drive systems and machine control. As a full-service partner, it supports product features, safety, security and compliance across diverse industries with reliable engineering and tailored solutions that meet demanding application requirements in a wide range of markets worldwide.

## Inter Control – Hermann Kohler Elektrik GmbH & Co. KG

**Booth 3320**

**Web:** [intercontrol.de](http://intercontrol.de)

Inter Control is a leading supplier of mobile-suitable PLCs, displays and I/O-modules which also cover safety aspects, such as PLD and AgPLD. Beside the delivery of hardware components, it also offers application support to customers, from consult, system design and programming to system integration and training.

## italpres Eredi Zani Bruno snc

**Booth: 5045**

**Web:** [www.italpres.com](http://www.italpres.com)

italpres Eredi Zani Bruno is an aluminum die-casting foundry. Established 1947, it offers in-house tooling development, design and manufacturing; presses up to 1,400t locking force; technically challenging castings, sets and assemblies; additional operations with external partners upon demand; and a broad diversification of application sectors.

## ITK Engineering

**Booth: 3020**

**Web:** [www.itk-engineering.de/en](http://www.itk-engineering.de/en)

In an industry moving from hardware-driven to software-driven systems, digital intelligence is the key differentiator. ITK Engineering, a Bosch subsidiary, acts as a technology partner, offering platform-independent software and system development. With expertise in AI, safety and cybersecurity, ITK Engineering supports customers from idea to industrialization across various industries.

## ITT Cannon GmbH

**Booth: 3160**

**Web:** [www.ittcannon.com](http://www.ittcannon.com)

ITT Cannon is a leading global manufacturer of harsh environment connector products serving customers in the transportation, industrial, aerospace and defense markets. The company partners with its customers to deliver innovative interconnect solutions that meet the highest performance, durability and quality standards. ITT Cannon connects – when it matters most.

## iVT – Industrial Vehicle Technology International

**Booth: 1245**

**Web:** [www.ivtinternational.com](http://www.ivtinternational.com)

*Industrial Vehicle Technology International (iVT)* is the media brand for the global off-highway industrial vehicle sector. It connects leading component suppliers with the OEM decision-makers building tomorrow's construction, agricultural, mining, forestry, logistics and material-handling vehicles. Across print, digital, podcasts, webinars and video, *iVT* delivers unmatched access.

## iVT Expo 2027

**Booth: 5060**

**Web:** [ivtexpo.com](http://ivtexpo.com)

Discover the latest components, materials, systems and technologies from leading global suppliers powering the next generation of industrial and off highway vehicles. iVT Expo delivers a focused exhibition in a compact format, helping visitors move faster, connect smarter and see more. From construction and mining to agriculture, material handling, forklifts and forestry, this is where the industry comes to do business and find what is next. Book your booth now for iVT Expo 2027.

## iVT Off-Highway Vehicle Technology Expo 2026

**Booth: 5060**

**Web:** [ivtexpo-usa.com](http://ivtexpo-usa.com)

Tap into the North American off-highway vehicle market at iVT Expo USA, where the region's leading OEMs, engineers and buyers come to source new solutions. Held in Chicago, the event puts you face to face with decision-makers actively working across construction, mining, agriculture, material handling, forklifts and forestry. Built for efficiency and real business outcomes, the show floor connects you directly with companies looking to innovate, upgrade and stay competitive in a fast moving market. Position your brand where it matters most. Book your booth now for iVT Expo USA 2027.

## J

### John Deere Electronics

**Booth: 5000**

**Web:** [www.deere.com/en](http://www.deere.com/en)

Deere & Company is a world leader in providing advanced products, technologies and services that help customers revolutionize agriculture and construction. Building on that legacy, John Deere Electronics delivers proven electronic and power electronics solutions not only for John Deere machines, but also for OEMs worldwide.

## Jungheinrich Norderstedt AG & Co. KG

**Booth: 6020**

**Web:** [www.jungheinrich.com](http://www.jungheinrich.com)

Jungheinrich Powertrain Solutions designs, manufactures and integrates complete electric powertrain systems for off-highway applications. Leveraging decades of electric mobility expertise, the portfolio includes lithium-ion batteries, inverters, motors and charging solutions, supporting OEMs with scalable, industrial-grade systems for reliable and efficient electrification.

## K

### Kinell

**Booth: 1190**

**Web:** [www.gokinell.com](http://www.gokinell.com)

Kinell is the decarbonization and automation innovation partner to international companies in the off-highway, special vehicle, professional marine and temporary power industries. The company brings together the mechanical, electrical, software and control expertise needed to support OEMs in the design, integration and development of high-performance, reliable, energy-efficient machines.

### Kolektor Mobility d.o.o.

**Booth: 7040**

**Web:** [www.kolektor.com/en](http://www.kolektor.com/en)

A trusted technology partner in the development and manufacturing of high-precision permanent magnet brushless motors and complete drive systems for robotics and e-mobility applications, Kolektor's portfolio includes motors and integrated drive solutions optimized for safety, precision and reliability, supported by fully integrated in-house development and production capabilities.

### Kreisel Electric

**Booth: 5000**

**Web:** [www.kreiselectric.com](http://www.kreiselectric.com)

Kreisel Electric is an international battery solution-provider based in Austria. It provides customers with state-of-the-art technology solutions for a wide range of mobile and stationary applications. Kreisel's core competence includes battery development and production, integration and testing and prototyping and serial production, as well as software development.

## KSD Technologies GmbH

**Booth: 7070**

**Web:** [www.ksdglobal.com](http://www.ksdglobal.com)

KSD is an expert in tailor-made engineering product design solutions in the off-highway, construction equipment and material handling industries. The company has a blend of mechanical, electrical, embedded and technical documentation experts who offer ideas from concept to realization with successful prototypes. Contact: bhushan.kulkarni@ksdglobal.com | Mob: +91 98811 24774

## L

### Leadrive Technology Germany GmbH

**Booth: 2220**

**Web:** [leadrive.de](http://leadrive.de)

Leadrive Technology is a tech-driven provider of electric control solutions primarily engineered for new energy vehicles. It has built a tiered solution portfolio that encompasses power modules, motor controllers and power electronics building blocks. Visit the booth and discuss with Will Huang, [wei.huang@leadrive.com](mailto:wei.huang@leadrive.com), about your electrification needs.

### Lumikko

**Booth: 3220**

**Web:** [www.lumikko.com](http://www.lumikko.com)

Lumikko is a Finnish family-owned specialist in advanced thermal management for mobile machinery and demanding environments. Since 1970, it has delivered reliable cooling and heating solutions that safeguard critical systems. Lumikko optimizes battery performance, electrification and charging infrastructure with engineered systems built for durability, efficiency and extreme conditions worldwide.

## M

### Makersan

**Booth: 2060**

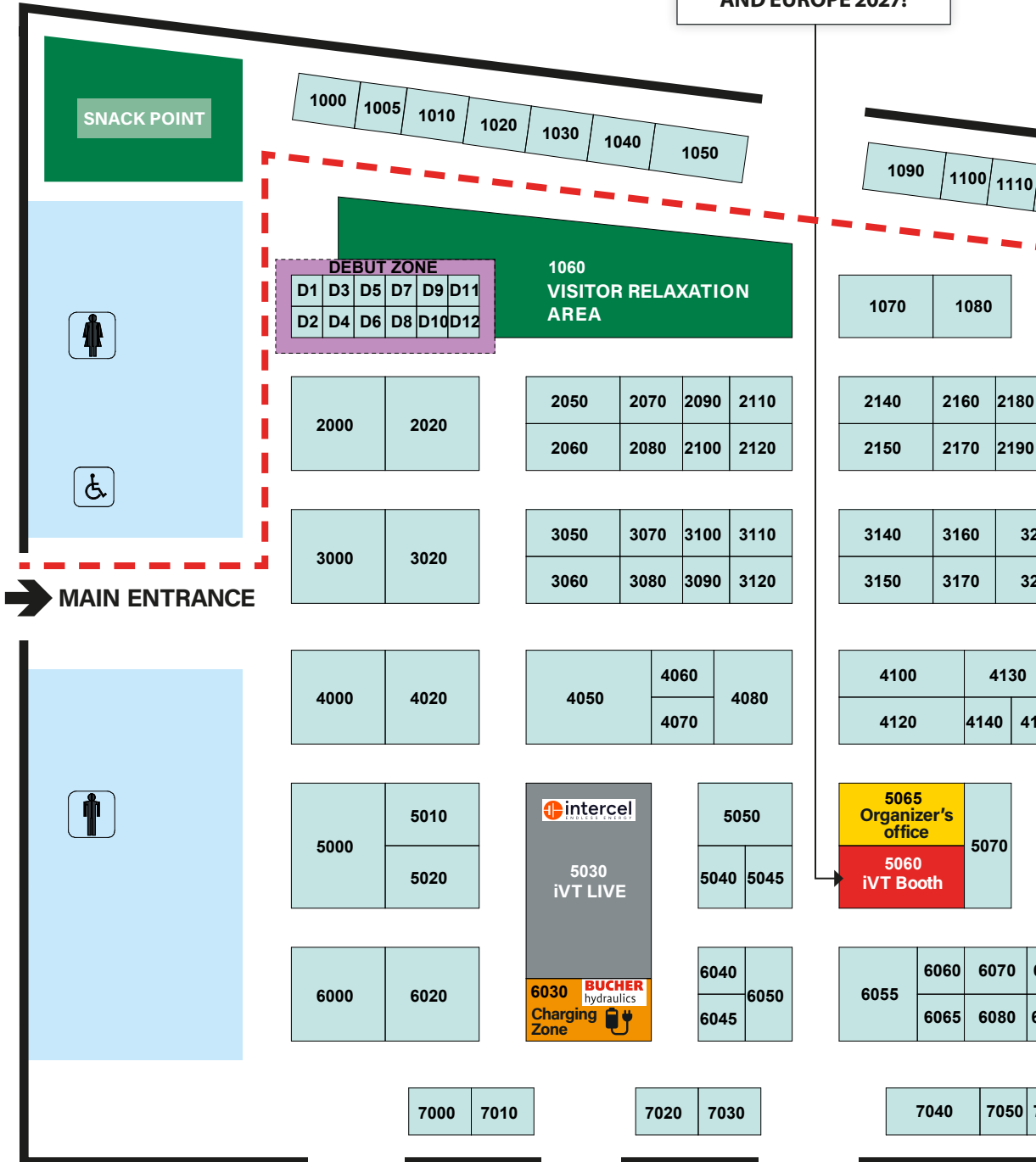
**Web:** [www.makersan.com](http://www.makersan.com)

Makersan's electronic and mechatronic system solutions offer a foundation of product and process expertise across mobile and industrial manufacturing applications. Its broad portfolio, including controllers, displays, sensors, pedals, joysticks and keypads, creates an integrated ecosystem that supports the development, integration and management of mechanical and electronic systems in diverse applications.

# iVT EXPO

INDUSTRIAL VEHICLE TECHNOLOGY

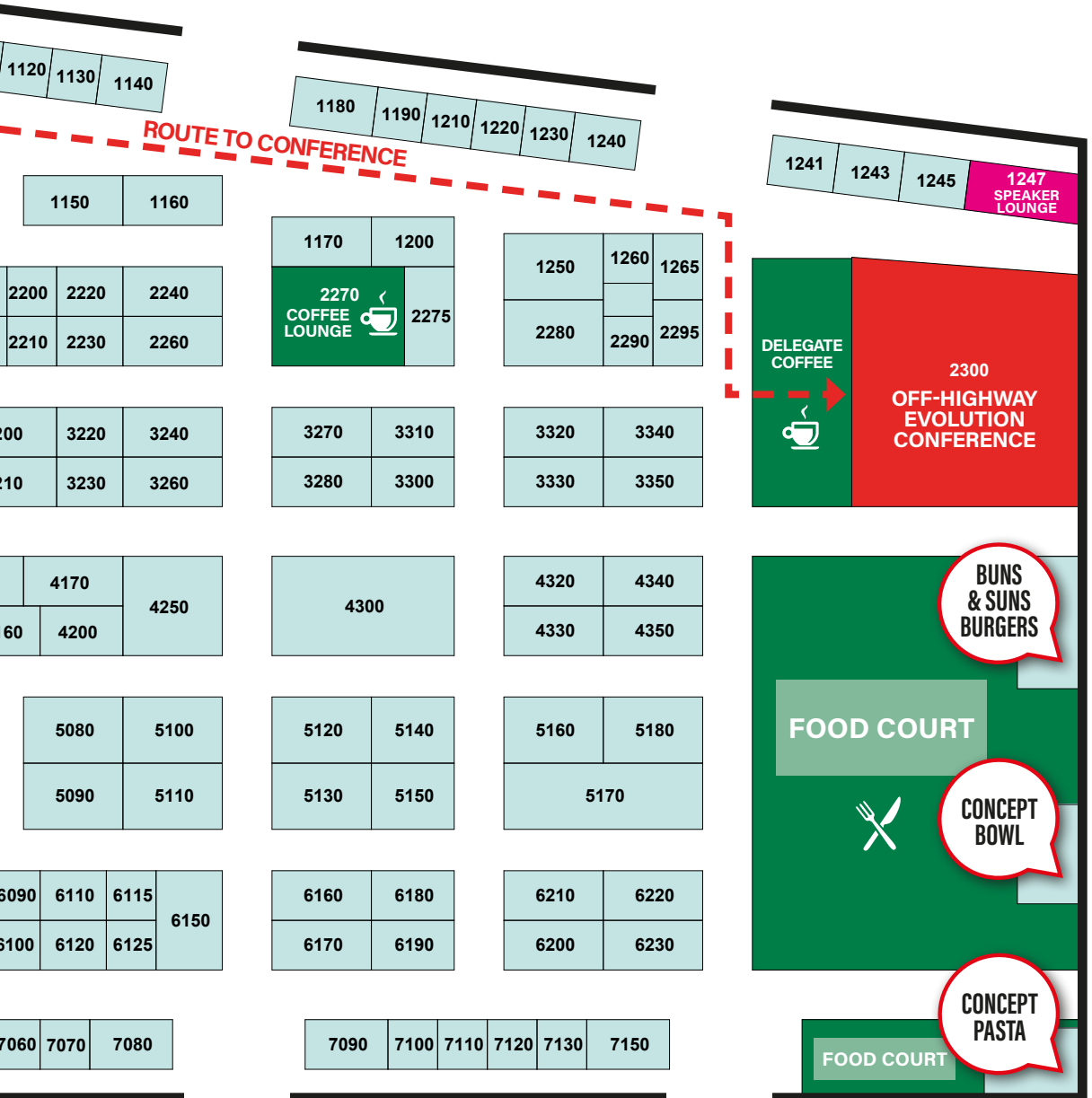
**BOOK YOUR EXHIBITION SPACE FOR USA 2026 AND EUROPE 2027!**



# iVT EXPO

INDUSTRIAL VEHICLE TECHNOLOGY

## HALL 1



**Maximatecc****Booth: 2160****Web:** [www.maximatecc.com](http://www.maximatecc.com)

Maximatecc specializes in operator information and control solutions for industrial vehicle manufacturers and system integrators in a diverse range of industries. It also designs and manufactures custom instrument clusters under leading brand names such as Stewart Warner, Datcon, Turotest and AST.

**ME Mobil Elektronik GmbH****Booth: 3100****Web:** [www.mobil-elektronik.com](http://www.mobil-elektronik.com)

Mobil Elektronik is the leading supplier of steer-by-wire systems for on-road and off-road commercial vehicles. Its customizable solutions meet the highest safety (up to ASIL D) and cybersecurity standards, ensuring future sustainability and full approval for public roads.

**Melegari Luigi & Figli Srl****Booth: 3120****Web:** [www.melegari.it](http://www.melegari.it)

Melegari Electric Motors stands for excellence in the production of high-quality electric motors. With a strong tradition of innovation and precision, the company delivers reliable solutions for a wide range of industrial applications. Visit the booth to discover high-performance motors, custom designed to meet every requirement.

**Mevea Ltd****Booth: 1210****Web:** [mevea.com](http://mevea.com)

Mevea provides software for simulation-based control system development. Real-time simulation can include the machine, its work process (e.g. soil handling), dynamic environment interaction (e.g. traffic in the work area), sensors (e.g. lidar and camera) and integration with other development environment hardware/software assets (e.g. using FMI/FMU or ROS2).

**Mintec Industriale Srl****Booth: 4020****Web:** [www.mintec.it](http://www.mintec.it)

Mintec is an Italian manufacturer of industrial connectors. With years of experience, Mintec is a trusted partner for OEMs in cranes, concrete mixers, mining equipment and heavy-duty vehicles. Its connectors are engineered to solve real-world challenges and ensure reliable performance in the most demanding environments.

**Miunske****Booth: 3240****Web:** [www.miunske.com](http://www.miunske.com)

Miunske develops, manufactures and supplies electronics for commercial vehicles and mobile machinery. From concept to series production in Grosspostwitz, Germany, Miunske uses a wide range of technologies, provides application-specific control solutions, and reliably delivers as a medium-sized company with a large production and logistics center.

**Moba Mobile Automation****Booth: 6210****Web:** [www.moba-automation.de](http://www.moba-automation.de)

Moba Mobile Automation has been the first choice in mobile automation since 1972. Moba develops and produces innovative machine control systems, safety systems and mobile weighing technologies, as well as individual software solutions. Its robust and reliable sensors, controllers and control units are focused on OEM partners.

**Moteg GmbH****Booth: 1050****Web:** [www.moteg.de/en](http://www.moteg.de/en)

Moteg, founded in 2014 and based in Handewitt, Germany, develops and manufactures electric motors and auxiliaries for mobile applications. The company offers engineering, consulting and production services, focusing on efficient, lightweight and customized solutions for electrification in transportation and industry.

**Motion Makers GmbH****Booth: 2100****Web:** [www.motion-makers.com](http://www.motion-makers.com)

Motion Makers is a global leader in drive technology for test bench applications and special motors, with 80 years of experience. It delivers customized high-performance electric motor solutions and supports engineering teams worldwide with robust, precise drives, backed by global locations, 24/7 service and expert on-site support.

**Moving Magnet Technologies****Booth: 5150****Web:** [www.movingmagnet.com/en](http://www.movingmagnet.com/en)

Moving Magnet Technologies (MMT) is an engineering and licensing company specializing in electromagnetism, mechatronic and fluidronic solutions. With strong expertise in advanced R&D, MMT designs innovative motors, actuators, sensors and compact systems, supporting customers worldwide in mobility, industrial and healthcare applications.

**MRS Electronic GmbH & Co. KG****Booth: 3150****Web:** [www.mrs-electronic.com](http://www.mrs-electronic.com)

MRS Electronic, a leading provider of control solutions for the automotive industry, offers compactly designed solutions that provide high functionality, flexibility and scalability while being cost-effective. MRS Electronic's expertise lies primarily in the niche market of small controllers and products such as relays, gateways, controllers, CAN controllers and HMI systems.

**Multi-Wing****Booth: 4140****Web:** [www.multi-wing.com](http://www.multi-wing.com)

Multi-Wing delivers compact, high-efficiency DC fans for demanding off-highway and industrial vehicle applications. Its low-noise, speed-controllable fans optimize cooling for electric and hybrid drivetrains, improving thermal management and component life. Visit the booth at iVT Expo to explore customizable DC fan solutions that support higher vehicle performance, reliability and sustainability.

**N****Neusys Technology****Booth: 2200****Web:** [www.neusys-tech.com](http://www.neusys-tech.com)

Neusys Technology designs, manufactures and markets innovative edge AI computing platforms and rugged embedded computers. It specializes in the thermal management and integration of high-computation-power CPUs and GPUs. Neusys' proficiency in specialized I/O connectivity allows it to utilize various cameras and sensors to meet diverse application needs.

**Neuser Elektrotechnik GmbH****Booth: 2240****Web:** [www.neuser-elektrotechnik.de](http://www.neuser-elektrotechnik.de)

Neuser Elektrotechnik GmbH – your partner for smart automation in agricultural and automotive technology. Based in the Westerwald region near Wissen (Sieg), Neuser Elektrotechnik develops and implements customized automation solutions for mobile machinery, agricultural systems and industrial applications. The company combines experience, technical precision and innovative strength.

**NewTec****Booth: 2220****Web:** [www.newtec.de](http://www.newtec.de)

Visit the booth to discover what NewTec can offer.

**NVR****Booth: 2070****Web:** [www.nvr-us.com](http://www.nvr-us.com)

NVR is a global electrification partner specializing in off-highway equipment. It provides a comprehensive portfolio of electrification solutions, delivering end-to-end platforms that empower its partners to innovate and transform. As a recognized leader in the off-highway industries it serves, NVR combines deep expertise with hands-on engineering excellence.

**NX Technologies****Booth: 3210****Web:** [www.nx-tech.com](http://www.nx-tech.com)

NX Technologies delivers compact, high-performance inverters (1-350kW) and battery management systems that boost the efficiency, safety and integration simplicity of electric and hybrid vehicles. Engineered and manufactured in the EU, its power electronics enable OEMs across all EV segments to accelerate electrification with reliable, cost-effective solutions.

**OEM****Booth: 4170****Web:** [www.oemsrl.com/en](http://www.oemsrl.com/en)

OEM designs and manufactures custom electrical wire harnesses for industrial vehicles, automation and aerospace applications. With facilities in Italy and Romania, it provides engineering-driven industrialization, prototyping and full lifecycle support.

**Oesse****Booth: 5180****Web:** [www.oesse.com](http://www.oesse.com)

Oesse is driven by a passion for the future. The company's mission is to constantly accelerate toward innovation, dedicating its energy to finding new solutions and refining production processes. This commitment allows Oesse to offer heat exchangers that set market standards for superior quality.

**Omni Gear****Booth: 6055****Web:** [www.omnipowertrain.com](http://www.omnipowertrain.com)

Omni Powertrain Technologies is a global provider of product solutions for modern electrical, mechanical or hydraulic powertrains for motorsport, commercial vehicles and construction, mining and agricultural applications.

**OMSI Trasmissioni SpA****Booth: 1000****Web:** [www.omsitrasmissioni.com](http://www.omsitrasmissioni.com)

OMSI Trasmissioni has been manufacturing complete driveline solutions since 1959. Specializing in hybrid and electric powertrains, OMSI offers e-axles, 2-speed powershift e-gearboxes, PTO/PTI systems and cooling modules for EV, HEV and PHEV vehicles. At iVT Expo 2026, OMSI presents the EP-2V e-gearbox and EWOP960 electric pump by Enveteq.

**Owasys Advanced Wireless Devices SL****Booth: 1200****Web:** [owasys.com](http://owasys.com)

Owasys, an HMS Networks brand, delivers rugged telematics solutions built for demanding industrial and off-highway environments. Its devices provide reliable vehicle tracking, remote monitoring and data connectivity – even in harsh conditions. Discover how Owasys telematics hardware helps fleet operators and OEMs gain real-time visibility and operational control.

**PCQ Technologies****Booth: 1010****Web:** [www.pcqtech.com](http://www.pcqtech.com)

PCQ Technologies is a leading manufacturer of high-grade, optical polycarbonate glazing, with expertise in producing large complex windshields, canopies, doors and other enclosures for off-highway and industrial vehicles. Visit the booth to discuss the design advantages of using polycarbonate in your industrial vehicle cab. Contact Jason Howard: [Jason@pcqtech.com](mailto:Jason@pcqtech.com) | Tel: +447800 911110

**PEAK-System Technik GmbH****Booth: 1200****Web:** [www.peak-system.com](http://www.peak-system.com)

PEAK System, an HMS Networks brand, showcases its latest CANbus tools at iVT Expo. The PCAN-Explorer 7 software enables powerful bus analysis and simulation, while the PCAN-Diag series offers portable, professional diagnostics in the field. Essential tools for engineers developing and maintaining industrial vehicle electronics and networks.

**Peres****Booth: 3300****Web:** [www.peres.de](http://www.peres.de)

Peres and Betron are leading companies in the mobile machinery industry. Peres provides high-quality, ruggedized connection cables, while Betron specializes in control systems. Together, they offer OEM manufacturing depth and comprehensive service to take machines to the next level.

**Peters Indu-Produkt GmbH****Booth: 6150****Web:** [www.peters-indu.de](http://www.peters-indu.de)

Visit the booth to discover what Peters Indu-Produkt can offer.

**Peterson Europe****Booth: 6230****Web:** [www.peterson europe.com](http://www.peterson europe.com)

Based in Aylesbury, UK, and in Zvevegem, Belgium, Peterson Europe is the European sales, distribution and technical support partner of Peterson Manufacturing. Peterson Europe supplies customers throughout the UK, Europe, the Middle East and India from modern sales/distribution facilities in England and Belgium.

**Phi-Power AG****Booth: D5****Web:** [www.phi-power.com](http://www.phi-power.com)

Visit the booth to discover what Phi-Power can offer.

**Poclain Hydraulics Industrie SAS****Booth: 1050****Web:** [poclain.com](http://poclain.com)

Visit the booth to discover what Poclain Hydraulics Industrie can offer.

**PohlBock GmbH****Booth: 3070****Web:** [www.pohlbock.com](http://www.pohlbock.com)

Visit the booth to discover what Pohlbock can offer.

**Powell Electronics****Booth: 6080****Web:** [www.powell.com](http://www.powell.com)

Powell Electronics provides environmentally rugged components for heavy-vehicle high-speed interconnect, 1000BASE-T1 Gb-ethernet and ISO 11783-2 applications. Powell is a franchised distributor for all major connector manufacturers and also customizes a vast array of related products, including ground radar, switches, connectors, circuit breakers, relays and value-added assemblies.

**Power Progress****Booth: 1220****Web:** [www.powerprogress.com](http://www.powerprogress.com)

*Power Progress* offers expert insights on engine-powered equipment across the on-highway, off-highway, marine and stationary markets. Since 1935, it has covered engines, electrification and alternative fuels through news, events and digital media, serving as the leading source of information for professionals in the evolving power solutions industry.

**Prodrive Technologies****Booth: 6170****Web:** [www.prodrive-technologies.com](http://www.prodrive-technologies.com)

Established in 1993, Prodrive Technologies is among the fastest expanding privately held technology firms in Europe. Headquartered in Eindhoven, the Netherlands, it also operates offices in the United States, China, South Korea, Malaysia and Japan. Within Prodrive's onboard solutions portfolio, it provides embedded controls, including HMI, controllers and edge computers.

**Q****Qexpand Technologies GmbH****Booth: 3230****Web:** [www.qexpand.de](http://www.qexpand.de)

Qexpand Technologies, formerly known as Qexpand, began designing, manufacturing and marketing sophisticated motor speed controllers in 2011. Qexpand's mission is to be the world's leading provider of electric drive technology solutions for battery-powered vehicles and drive the world's transition into electric energy!

**R****RAFI GmbH & Co. KG****Booth: 5130****Web:** [www.rafi-group.com](http://www.rafi-group.com)

As an experienced partner, RAFI offers reliable off-the-shelf HMI solutions for off-highway applications. High quality, proven processes, long-term supply reliability, and spare parts availability meet the industry's specific requirements. Easy integration into communication systems such as CAN, LIN and ethernet reduces development costs and supports flexible customization.

**Red Dot Europe Ltd****Booth: 2050****Web:** [www.reddotcorp.com](http://www.reddotcorp.com)

Red Dot designs and manufactures premium mobile HVAC solutions, collaborating with OE manufacturers worldwide. Its innovation, expertise and global parts distribution network ensures reliable, tailored climate control systems and strong aftermarket support.

**REFUdrive GmbH****Booth: 3090****Web:** [www.refu-drive.com](http://www.refu-drive.com)

High-performance power electronics have always been REFUdrive's core competence. Together with its customers, the company develops exactly the specific solution that fits the respective requirement. Whether in automated vehicles for container transportation, agricultural or construction machinery or municipal vehicles, the solutions from REFUdrive can be used flexibly, efficiently and sustainably.

**renco GmbH****Booth: 2290****Web:** [www.renco.de](http://www.renco.de)

renco is an authorized DanaTM4 value-added reseller and EV system integration company based in Cologne, Germany. It designs, integrates and validates complete electric powertrains for commercial and off-highway vehicles, from architecture and control software to high-voltage systems and commissioning. Over 15 years of experience. Full system ownership. Predictable results.

**Rheintacho Messtechnik****Booth: 7120****Web:** [www.rheintacho.de](http://www.rheintacho.de)

Rheintacho Messtechnik is a company with a longstanding tradition and has been engaged since 1901 in the field of rotational speed, a crucial control quantity for mechanical processes. In-house product development, production and assembly departments guarantee quick, innovative solutions for customers' individual requirements.

**Rise Robotics****Booth: 2210****Web:** [www.riserobotics.com](http://www.riserobotics.com)

Rise Robotics electrifies heavy machinery with Beltdraulic, a fluid-free actuation system delivering hydraulic-level force with greater speed, efficiency, precision and control. Visit the booth to try the fully electric actuator, which eliminates hydraulic maintenance, improves uptime, increases throughput and enables cleaner, greener, more reliable industrial systems.

**Rögelberg Getriebe GmbH & Co. KG****Booth: 3060****Web:** [www.roegelberg-getriebe.de](http://www.roegelberg-getriebe.de)

Rögelberg Getriebe – your partner for electric drives and individual solutions! The company develops innovative gearbox solutions that help to increase energy efficiency and reduce the costs of the entire drive system. If you are looking for a customized gearbox solution, visit the booth!

**Rokatec Kabelkonfektion****Booth: 6150****Web:** [www.rokatec.de](http://www.rokatec.de)

Rokatec manufactures customized cable harnesses and electromechanical assemblies for agricultural and construction machinery. With production in Germany and Portugal, it provides plug-and-play wiring solutions, prototype development and series production. It focuses on robust, installation-ready systems designed for demanding off-highway applications.

**Roquet Hydraulics****Booth: D9****Web:** [www.roquetgroup.com](http://www.roquetgroup.com)

Roquet designs and manufactures high-quality hydraulic cylinders, gear pumps and motors, and control valves for mobile and industrial applications. Combining decades of engineering expertise with integrated manufacturing, it delivers reliable and customized hydraulic solutions that help OEM customers improve machine performance, efficiency and durability in demanding operating environments worldwide.

**Rose Systemtechnik GmbH****Booth: 1240****Web:** [www.rose-systemtechnik.com](http://www.rose-systemtechnik.com)

Rose Systemtechnik is one of the world's leading innovative providers of industrial enclosure systems. The company manufactures and develops high-quality industrial enclosures made of aluminum, stainless steel and polyester, as well as system solutions for the mechanical and plant engineering, automation, hazardous areas, measurement and control, and food and beverage industries.

**RoyPow Technology GmbH****Booth: 1150****Web:** [www.roypow.com](http://www.roypow.com)

RoyPow, established in 2016, is a national 'Little Giant' enterprise and national high-tech enterprise, specializing in R&D, manufacturing and sales of motive power systems and energy storage systems as one-stop solutions. It covers complete power solutions for off-road vehicles, marine power system, jobsite ESS, vehicle-mounted ESS and electric retrofit solutions.

**RRC power solutions GmbH****Booth: 6125****Web:** [rrc-ps.com](http://rrc-ps.com)

RRC power solutions develops and manufactures high-quality standard battery packs for medical, industrial, robotics and mobility applications. Combining proven technology, safety and reliable availability, RRC delivers efficient power solutions for demanding applications worldwide.

**S****SAB Bröckskes GmbH & Co. KG****Booth: 4330****Web:** [www.sab-kabel.de](http://www.sab-kabel.de)

SAB Bröckskes is one of the world's leading cable manufacturers and suppliers of cable assemblies, as well as temperature measurement technology.

**Scania Industrial Batteries****Booth: 1005****Web:** [www.scania.com/industrial-batteries/en/home.html](http://www.scania.com/industrial-batteries/en/home.html)

Scania Industrial Batteries makes scalable battery systems to simplify off-road electrification. Designed for seamless integration, the systems operate within 400-800V powertrains and offer scalable energy capacities from 21 to 624kWh. Engineered for demanding environments, they support applications in mining, construction, energy storage and other industrial sectors.

**Schaeffler****Booth: 7130****Web:** [www.schaeffler.de/en](http://www.schaeffler.de/en)

The Schaeffler Group has been driving forward groundbreaking inventions and developments in the field of motion technology for over 75 years. With innovative technologies, products and services for electric mobility, CO<sub>2</sub>-efficient drives and chassis solutions, the company is a reliable partner for making motion more efficient, intelligent and sustainable.

**Schwarz Elektromotoren GmbH****Booth: 6120****Web:** [www.schwarz-elektromotoren.de](http://www.schwarz-elektromotoren.de)

Schwarz Elektromotoren develops and manufactures efficient drive technology for a wide range of customized applications. From single units to mass production, it finds and provides tailor-made solutions for your specific requirements. Schwarz has stood for German engineering excellence since 1999. From development to manufacturing, it offers everything under one roof.

**Settima Meccanica Srl****Booth: 2000****Web:** [www.settima.it](http://www.settima.it)

Settima announces the new era of electrification by introducing its hydraulic and electrohydraulic solutions: ultra-silent, with no pulsations, energy-regenerative and rare-earths-free. The Continuum and 4Q Continuum hydraulics, along with the SpinRel synchronous electric motors, are breakthrough technologies leading the energy transition. Let's build the future together!

**Shijiazhuang Hanjiu Technology Co. Ltd****Booth: 7080****Web:** [www.hjhydraulic.com](http://www.hjhydraulic.com)

Hanjiu Hydraulic Group China, the top manufacturer of hydraulic motors, hydraulic pumps and hydraulic valves in China, welcomes your business. Visit [www.hjhydraulic.com](http://www.hjhydraulic.com), email [sales@sjzhjms.com](mailto:sales@sjzhjms.com) or Whatsapp: 0086 15933615273.

**Sigma Manufacturing Solutions****Booth: 1243****Web:** [www.sigmammanufacturingsolutions.com](http://www.sigmammanufacturingsolutions.com)

Sigma Manufacturing Solutions is an engineering-led manufacturing partner delivering precision castings, machined components, fabricated enclosures and integrated assemblies for electrification, mobility, energy and data infrastructure. It supports programs from prototype to series production through a flexible global network across Korea and India, enabling scalable, cost-effective and reliable supply.

**Siko****Booth: 3350****Web:** [www.siko-global.com](http://www.siko-global.com)

Siko has six decades of experience, providing a wide range of sensors for position detection, speed detection and inclination detection for mobile machines. With a special focus on functional safety solutions, Siko offers long-standing know-how and robust sensors for the next generation of industrial vehicles.

**siliXcon sro****Booth: 2295****Web:** [www.silixcon.com](http://www.silixcon.com)

siliXcon develops and manufactures traction motor controllers and complete e-drive systems. It delivers high-performance solutions for land, marine, aerospace and defense. siliXcon's offerings include advanced FOC inverters, efficient electric motors and tailored battery systems, enabling customers to achieve superior performance, precision and competitive differentiation across diverse applications and demanding environments.

**Solectrix****Booth: 4070****Web:** [www.solectrix.de](http://www.solectrix.de)

As a development partner for OEMs and suppliers, Solectrix is involved in numerous technology projects, such as a digital mirror replacement system for trucks. Solectrix offers a comprehensive framework for camera systems in industrial vehicles, which provides a reliable base for customers' systems and accelerates product and application development.

**Sonceboz SA****Booth: 5150****Web:** [sonceboz.com](http://sonceboz.com)

Sonceboz develops high-precision mechatronic solutions for industrial, medical and mobility applications. With over 90 years of expertise, it designs and manufactures innovative actuators and systems that combine performance, reliability and sustainability, helping customers tackle technological challenges and support the transition to more efficient and responsible solutions.

**Sontheim Industrie Elektronik****Booth: 2080****Web:** [www.s-i-e.de](http://www.s-i-e.de)

Sontheim is a leading electronic system provider of futureproof automation, diagnostics and connectivity solutions. For over 25 years, Sontheim's customers worldwide have been receiving a wide range of hardware and software systems. Sontheim stands for technically excellent products, very close customer care and complete system solutions.

**Star Electronics****Booth: 2170****Web:** [www.flex-product.com](http://www.flex-product.com)

Star manufactures custom-fit hardware and software for vehicle networking and vehicle electronics. In addition, it offers standard and custom special tools for precise measurement and simulation technology, as well as sophisticated control technology. Star supports customers in highly complex vehicle electronics and networking technology.

**Studer Cables AG****Booth: 5090****Web:** [www.studercables.com](http://www.studercables.com)

Studer Cables presents BETatron, a flexible and robust high-voltage cable family for electric commercial vehicles and mobile machinery. Developed to ISO 19642, it offers secure sheath fit, easy installation and strong resistance to heat, media and aging for reliable e-mobility applications.

**STW (Sensor-Technik Wiedemann)****Booth: 3330****Web:** [www.stw.technology](http://www.stw.technology)

STW is an international company based in Kaufbeuren, Germany. For over 40 years, it has been delivering automation and digitalization solutions for mobile machines. Its modular system of customizable products, systems and software helps customers make their machines world-leading through innovative technology.

**Suncar****Booth: 2120****Web:** [www.suncar-ag.com](http://www.suncar-ag.com)

Suncar is a Swiss engineering company developing energy-efficient and autonomous system solutions for off-highway vehicles. Its development, product and service units deliver electric drive systems, power distribution, automation and digital vehicle management, supporting OEMs from feasibility studies and prototypes to lifecycle support with modular high-voltage distribution technology, including solutions.

## T

**technotrans SE****Booth: 1250****Web:** [www.technotrans.de](http://www.technotrans.de)

In the dynamic world of e-mobility, technotrans develops innovative BTMS solutions for cooling and temperature control of batteries and electric drive systems. Its customized cooling systems improve the availability, safety, service life and efficiency of battery-powered vehicles. Using advanced technology, technotrans ensures optimal operating temperatures and supports sustainable mobility solutions.

**Tianjin Santroll Electric Technology Co. Ltd****Booth: 5020****Web:** [www.santroll.com](http://www.santroll.com)

Santroll focuses on motors and controllers, ISO/CE certified. Self-developed hairpin motors boost efficiency by 12%+ while 3-30KW hybrid solutions cut fuel by 25-40%, driving compliance, difference and innovation. Sales manager: Liu Wenyan, +86 15222712157, [liuwenyan@santroll.com](mailto:liuwenyan@santroll.com)

**Topcon Electronics****Booth: 7010****Web:** [www.topconpositioning.com](http://www.topconpositioning.com)

For nearly a century, Topcon has been a leading innovator in precision technologies. Its products have transformed infrastructure and agriculture worldwide by harnessing the power of precision in value-added solutions designed to save time and money, enable better outcomes and build the future of global markets.

**Tria Technologies GmbH****Booth: D7****Web:** [www.tria-technologies.com](http://www.tria-technologies.com)

Tria develops and delivers robust embedded compute solutions – modules, systems and HMIs – tailored to OEMs in the commercial transportation, construction and agricultural sectors. It partners closely with clients to tackle engineering challenges, accelerate innovation cycles and equip vehicles for the rigors of real-world operation.

**TTControl GmbH****Booth: 4050****Web:** [www.ttcontrol.com](http://www.ttcontrol.com)

TTControl is a joint-venture company of TTTech Group and Hydac International, offering advanced control systems and operator interfaces for mobile machinery and off-highway vehicles. Its solutions ensure quick and economical development of reliable electronic control systems, backed by long-term safety experience and innovative technology.

## TTI

**Booth: 2280****Web:** [www.ttieurope.com](http://www.ttieurope.com)

TTI, a Berkshire Hathaway company, is a global authorized distributor of electronic components, founded in 1971. Known for its extensive product range, strong inventory and advanced supply chain solutions, it serves multiple industries worldwide. With subsidiaries and thousands of employees, TTI operates globally, supported by vast warehouse capacity worldwide.

**Twin Disc****Booth: 5120****Web:** [www.twindisc.com](http://www.twindisc.com)

Twin Disc delivers advanced power transmission technology for applications from wheels to propellers. Supporting internal combustion, hybrid and fully electric systems, Twin Disc helps operators reduce emissions, improve efficiency and lower operating costs with reliable, high-performance solutions.

**Tyri Sweden AB****Booth: 5100****Web:** [www.tyri.se](http://www.tyri.se)

As an industry leader in off-road work lighting, Tyri's focus is on the development of high-quality and intelligent lighting solutions for all off-road vehicles. Tyri works within sectors including construction, agriculture, forestry, mining, material handling and off-road. Tyri – lighting the way.

**TyroCharge****Booth: D1****Web:** [www.tyrocharge.com](http://www.tyrocharge.com)

TyroCharge develops manufacturer-independent fast-charging solutions for low-voltage applications. Its goal is to increase adoption through high-power, standardized interfaces. The company supports the LiCom standard (VDE 0622) and collaborates with OEMs and charger manufacturers, focusing on interoperable systems and real-world deployment across diverse industrial use cases.

## U

**U-Control Srl****Booth: 5070****Web:** [www.u-control.eu/en](http://www.u-control.eu/en)

U-Control develops system-integrated HMI platforms for off-highway machines. AX platforms enable OEMs to move from machine-by-machine design to a scalable system approach, ensuring consistency across interface, control logic and architecture, while supporting complexity management across development, integration and lifecycle.

**UniDrive Transmissions****Booth: 2210****Web:** [www.u-control.eu/en](http://www.u-control.eu/en)

Rise Robotics develops the patented Beltdraulic electromechanical cylinder – a fluid-free alternative to hydraulics – delivering comparable force and stroke with higher efficiency, closed-loop control and zero leaks. Ideal for electrifying mobile machinery and industrial equipment. Visit Rise alongside European partner UniDrive Transmissions at the shared booth for demos and partnership talks.

## V

**Variohm Group****Booth: 3280****Web:** [www.variohm.de](http://www.variohm.de)

The Variohm Group supplies advanced sensor solutions for special-purpose vehicles, and also creates custom designs. In addition to linear and rotary position, pressure, temperature and force sensors, Variohm offers rugged switches, speed sensors and keypads.

**Varionova Srl****Booth: D10****Web:** [www.varionova.tech](http://www.varionova.tech)

Varionova develops next-generation, Al-ready transmissions that can deeply change the mechanical systems they become part of. The company's flagship RatioZero technology is the world's first gear-based CVT, a breakthrough delivering the efficiency of traditional gears while providing smooth, stepless control. Around it, Varionova is developing several step and stepless transmissions.

**VDO****Booth: 5170****Web:** [www.fleet.vdo.com/fleet-charging-solutions](http://www.fleet.vdo.com/fleet-charging-solutions)

With its established VDO brand, Aumovio is a global leader in electronics and telematics for passenger cars, commercial and off-highway vehicles. Its portfolio spans smart tachographs, telematics, fleet platforms, trusted data, charging solutions and vehicle technologies that improve efficiency, compliance, safety, comfort and transparency for modern fleet operations worldwide today.

**Vector Informatik GmbH****Booth: 4330****Web:** [www.vector.com/de](http://www.vector.com/de)

Visit the booth to discover what Vector Informatik can offer.

**Veethree Technologies****Booth: 6050****Web:** [www.veethree.com](http://www.veethree.com)

Veethree is part of a worldwide network of companies manufacturing ruggedized cybersecure CANbus displays, sensors, gauges and bespoke clusters. Visual performance is at the heart of what they do, and they pride themselves in providing their customers with outstanding UI/UX solutions, along with delivering solid reliable hardware.

**Visage Technologies****Booth: 1260****Web:** [www.visagetechologies.com](http://www.visagetechologies.com)

Visit the booth to discover what Visage Technologies can offer.

**Vogel & Plötscher****Booth: 2090****Web:** [www.vogelundploetscher.de/en/products/drive-technology](http://www.vogelundploetscher.de/en/products/drive-technology)

Vogel & Plötscher specializes in axial flux technology, developing and manufacturing high-performance electric motors for demanding mobile applications. It produces axial flux motors and stator cores in-house and also offers machinery and services for customers' own production. Its solutions combine high power density, compact design and maximum efficiency.

**Völkel Mikroelektronik****Booth: 1090****Web:** [www.voelkel.de](http://www.voelkel.de)

With its Völkel Machine controls and displays, Völkel creates solutions for mobile machines in the construction, agricultural, forestry and municipal sectors as well as for special machines. It also supplies manufacturers (OEMs) of compaction machines with intelligent sensors and displays for compaction control. Völkel's focus is always on the customer.

**W****W Gessmann GmbH****Booth: 1265****Web:** [www.gessmann.com](http://www.gessmann.com)

Gessmann is a leading manufacturer of high-quality control systems and HMI solutions for industrial and mobile applications. The company develops durable operator seats, control stations and input devices known for ergonomics, precision and reliability, used worldwide in demanding environments.

**Wandfluh, Hydraulics + Electronics****Booth: D11****Web:** [www.wandfluh.com](http://www.wandfluh.com)

Wandfluh is a Swiss OEM, specializing in hydraulic valves and associated electronics. Development and virtually all production take place in Switzerland. This results in

innovative products such as the award-winning CMV(A) concept. Incidentally, the (A) stands for aluminum, but why not come and see for yourself at the booth?

**Weber-Hydraulik GmbH****Booth: D8****Web:** [www.weber-hydraulik.com](http://www.weber-hydraulik.com)

Weber-Hydraulik is a leading global manufacturer of customized hydraulic solutions, specializing in high-quality cylinders, control blocks, steering and suspension systems, valves and power units. The product portfolio is complemented by workshop equipment and jacks, as well as axial-flow motors for cutting-edge applications across a wide range of industries worldwide.

**Webtec (Europe)****Booth: 6060****Web:** [www.webtec.com](http://www.webtec.com)

Webtec is a specialist manufacturer of hydraulic measurement and control products, helping to improve the productivity of heavy machinery. For 60 years it has helped customers worldwide in the industrial, mobile and agricultural sectors to diagnose hydraulic faults, verify hydraulic conditions and achieve repeatable hydraulic control.

**Weiss Mobiltechnik GmbH****Booth: 7110****Web:** [www.wmt.gmbh](http://www.wmt.gmbh)

Practical experience meets innovation: Weiss develops proven solutions in software, display design, machine electronics and hydraulics – for forestry, agricultural and construction machinery; commercial vehicles; and industry. As a company with its own forestry vehicles, Weiss thinks from the user's perspective. With research, expertise and passion, Weiss sets new standards.

**WL Gore & Associates GmbH****Booth: 5080****Web:** [www.gore.com](http://www.gore.com)

WL Gore & Associates is a global materials science company dedicated to transforming industries and improving lives with innovative solutions. Since 1958, Gore has partnered with customers across electronics, automotive, aerospace and more to enhance product safety, efficiency and reliability in demanding environments worldwide.

**Wölfle****Booth: 3270****Web:** [www.woelfle-gmbh.de](http://www.woelfle-gmbh.de)

The Wölfle group of companies are modern and innovative, with over 50 years of tradition, global presence and headquarters in Ochsenhausen, Germany. Wölfle is a leading technology supplier of workplace commercial vehicles and on- and off-highway machines, with about 800 employees.

**Würth Elektronik ICS****Booth: 4300****Web:** [www.we-online.com/ics](http://www.we-online.com/ics)

Würth Elektronik ICS is a system supplier for electromechanical and electronic solutions for signal and power distribution, control and display and operating solutions. The company's key customers include well-known manufacturers of construction and agricultural machinery, as well as commercial vehicles and mobile machines.

**X****XPI Germany GmbH****Booth: 2190****Web:** [www.xpincorporated.com](http://www.xpincorporated.com)

XPI (Xcelerated Prototyping Inc.) is an engineering firm and authorized distributor of Keysight's multiphysics system simulation software SimulationX. Its engineering services include modeling, prototyping, digital twins and software development. XPI caters to businesses in industries such as automotive, heavy machinery and aerospace, which design and manufacture complex machines.

**Y****Ymer Technology GmbH****Booth: 4320****Web:** [www.ymer.com](http://www.ymer.com)

Ymer Technology develops and manufactures advanced thermal management solutions for industrial and automotive applications. The company specializes in high-performance cooling systems, custom-engineered heat exchangers and integrated thermal solutions, supporting customers worldwide with engineering expertise, reliable production and a strong focus on quality, efficiency and innovation.

**Z****Zapi Group****Booth: 5050****Web:** [www.zapigroup.com](http://www.zapigroup.com)

Visit the booth to discover what Zapi Group can offer.

**ZeBeyond Ltd****Booth: D4****Web:** [www.zebeyond.com](http://www.zebeyond.com)

Visit the booth to discover what ZeBeyond can offer.

# iVT LIVE ZONE 2026

DAY 1 WEDNESDAY, JUNE 10

## Morning session

### 10:30 - The diagnostics dilemma: How to enable Right to Repair and stay cybersecure



**Michael Friedrich**, product security expert and leader, ETAS, Germany  
**Rob Cheesey**, solution design director, ETAS, UK

Balancing out the need to access products' diagnostic capabilities with a low threshold for repair and securing them from misuse is a key enabler for market access in regulated markets like the EU. ETAS provides an overview of how the latest and most crucial cybersecurity risks are addressed to protect exposed interfaces and hinder illegitimate manipulation, as well as how to practically turn this challenge into a risk-adequate ecosystem approach to manage product diagnostic access dynamically. The presenters will share expert insights into how to escape the dilemma without introducing a weakest link through diagnostic infrastructure.

### 11:00 - Bumpy road to autonomous movement: From tech to Brussels



**Kalle Raita**, founder, Digisalix, Finland

Autonomous vehicles are no longer a question of if, but how. The road to practical autonomy, however, is long and winding. In this talk, Kalle Raita of Digisalix examines what it takes to move from promising prototypes to safe, scalable deployment. He presents practical approaches to autonomous path planning, including example architectures, technical prerequisites and three algorithmic strategies for reliable autonomous decision-making. Beyond engineering, the session addresses ecosystem and regulatory barriers to deployment – challenges we must solve together. The conclusion is straightforward: technology alone is not enough. Industry must actively help shape regulation to keep Europe competitive.

### 11:30 - Beyond iron: How the John Deere ecosystem accelerates OEM innovation



JOHN DEERE

**Shannon Grove**, marketing communications manager, John Deere Electronics, USA

In today's evolving industrial landscape, staying competitive requires more than building exceptional machines – it also demands mastery of the electronics, connectivity and digital intelligence that power them. Learn how John Deere has transformed beyond its roots as an equipment manufacturer to become a global leader in smart, connected electronics, and how OEMs can leverage these same proven technologies in their own vehicles.

## Afternoon session

### 14:00 - Collision avoidance with PLd Cat. 3 person detection



**Alexander Holler**, general manager, electronics division, Inter Control, Germany

This presentation introduces a collision avoidance system featuring functionally safe person detection compliant with DIN EN ISO 13849 (PLd, Category 3). The system combines certified environmental perception with vehicle motion data within a safetyPLC. Fusing safe person detection with trajectory and kinematic information enables risk-based intervention strategies suitable for automated and autonomous vehicles. Another key application example is the protection of rearward maneuvers. During reversing, the monitored safety field dynamically correlates the predicted vehicle path with validated environmental data. Brake interventions are therefore triggered exclusively in genuinely hazardous situations, reducing false positives while maintaining compliance with safety requirements.

### 14:30 - Panel discussion: Autonomous future? Exploring the challenges of machine control and driverless systems for off-highway vehicles



**Tom Stone**, editor, *iVT International*, Mark Allen Group, UK

**Dr Stefano Fiorati**, director, powertrain innovation, CNH Italia, Italy



**Michael Schwall**, expert research engineer, Volvo CE, Germany



**Agni Biswas**, autonomous control systems engineer, Danfoss Power Solutions, Denmark



Join *iVT International* for an expert panel exploring the evolving landscape of machine control and autonomous functions in off-highway vehicles. The session will bring together experts in the field from CNH, Volvo CE and Danfoss Power Solutions for a candid discussion on where the industry stands today and where it's heading next.

#### The audience will learn:

- How OEMs and suppliers are deploying machine control and autonomous functions on off-highway machines
- The engineering challenges holding back wider adoption of automation and machine control across the off-highway sector
- OEM and supplier collaboration on the road to full automation
- Agriculture versus construction – the different ways in which automation is being deployed in different sectors, and the ways it is likely to diversify in the future

## DAY 2 THURSDAY, JUNE 11

### Breakfast briefing

#### 08:00 - Interact Analysis executive market outlook



**Alastair Hayfield**, vice president of research, commercial vehicles, Interact Analysis, UK

2026 sees the continuation of the 'turbulence' trend in off-highway, where geopolitics causes yet more market uncertainty. However, clarity is beginning to emerge on a number of fronts: Chinese OEM expansion, alternative fuels, autonomy and more. This session will reflect on these themes and give delegates the information they need to navigate this year and beyond.

#### The audience will learn:

- Market performance across key segments
- The impact of the Iran conflict
- The direction of Chinese OEMs and how to react
- The latest market developments in electrification, autonomy and more

### Morning session

#### 10:30 - More than robust hardware: The software-defined approach for mobile and stationary machinery



**Max Rasumak**, program manager, off-highway vehicles, ITK Engineering, Germany

The future of industrial autonomy will not be defined by new hardware but by the software running on it. This presentation shows how proven off-highway hardware serves as a robust, cost-efficient platform for new use cases,

such as semi-stationary quarry operations. The value lies in software. This software-centric approach enables AI-based safety functions, including reliable human detection, even in harsh environments. The challenge is ensuring safety in systems whose core intelligence resides in learning algorithms. Agile, data-driven MLOps processes built on a connected data platform are key. This enables scalable autonomy, continuous safety assurance and measurable productivity gains.

#### 11:00 - What happens after delivery: Real-world heavy-duty battery abuse



**Dirk van Gogswaardt**, business development manager, Intercel, Netherlands

Most presentations on off-highway electrification stop at the delivery note. This one starts there. Drawing on years of field experience with battery packs deployed across construction, material handling and industrial equipment in real working conditions, this session presents what actually happens to battery systems after they leave the factory – not in lab conditions, but on active worksites where machines get in accidents, batteries are exposed to fire, are dropped from trucks in transport and fall from cranes. The audience will leave with a clear picture of what off-highway batteries have to endure under real abuse conditions.

\*This program may be subject to change

Scan the **QR code** to  
 download the showguide  
 app for the latest updates



# DRINKS PARTY

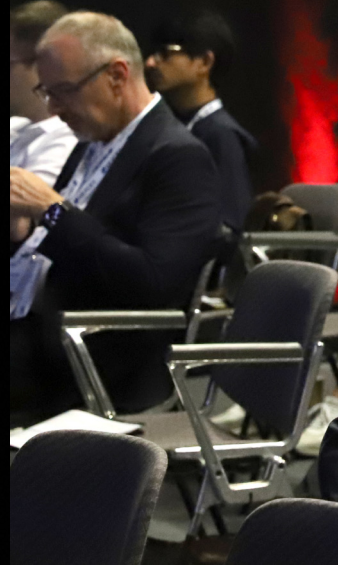
FREE TO  
 ATTEND!

**DAY 1**

**WEDNESDAY  
 JUNE 10, 2026**

**FROM 16:30 IN  
 THE iVT LIVE ZONE**







# 3 Conference themes:

## 1. AUTONOMY

Advancing autonomous systems for off-highway industries

## 2. ELECTRIFICATION AND ALTERNATIVE FUELS

Powering the future: electrification, hybrid systems and alternative fuels

## 3. HMI, DESIGN AND UX

Smart systems, connected vehicles and enhanced user interfaces

### DELEGATE DINING

Conference delegates and speakers can enjoy a variety of food options from the food court, coffee lounge and snack bar located in the hall. To receive your complimentary lunch, snacks and beverages please show your conference badge at the checkout

**For the latest updates and to plan your visit, download the show app!**

Scan the QR code



DAY 1 WEDNESDAY, JUNE 10

## Electric & Hybrid Powertrain Part 1

### 09:20 - Panel Discussion: Market evolution and current challenges for the electrification of off-highway vehicles

**Mats Bredborg**, electrification leader, Volvo Construction Equipment, UK

**Holger (HoPi) Pietsch**, director of business development, Moog Construction, Germany

**Chris Wiak**, CTO, Scania Industrial Batteries, Sweden

**Jose Luis Garcia Rodriguez**, global procurement category director – EV and innovation, Doosan Bobcat EMEA, Czech Republic

**Moderator: Chris Sleight**, managing director, Off-Highway Research, UK

This panel session will look at what's driving electrification today, and will include some global outlook fact and figures. The expert panel will explore the very real technical, operational and commercial considerations that OEMs and suppliers are facing in off-highway sectors.

### The audience will learn:

- OEM perspectives on electrification at scale: technical developments, infrastructure requirements, collaboration models and the impact of rising Chinese competition
- Operational and customer-driven challenges: diverse use cases, uptime expectations and integration issues
- Supply chain resilience and scalability: component availability to ensuring long-term support across global markets
- Tier 1 supplier insights: safety, modularity, standardization and sharing technical knowledge to speed innovation across the ecosystem
- Battery and system-level innovation: highlighting evolving architectures, thermal strategies, new battery chemistries and R&D trajectories shaping the next wave of product development

## SDV, Digitalization & HMI Part 1

### MODERATOR:

**Frank Ellenrieder**, senior product manager, digital platform and ecosystem, Bosch Rexroth AG, Germany

### 10:20 - CAN-related standards and specifications for embedded networking in mobile machines

**Dr Martin Merkel**, technical manager, CAN in Automation (CiA), Germany

There are different embedded CAN-based networks used in mobile machines. In the machine-related parts (attachments, body application units and implements), CANopen and J1939 are applied as CAN-based application layers. The presentation provides an overview about the current and future activities regarding harmonized and standardized solutions. This includes self-driving machines as well as permanently attached machines and changeable equipment. The presentation discusses also the specification and standardization of parameters and the mapping to messages (entity of the application layer). Cybersecurity and functional safety are also addressed in this paper.

### 10:40 - Securing the future: Navigating the Cyber Resilience Act in mobile off-highway

**Frank Ellenrieder**, senior product manager, digital platform and ecosystem, Bosch Rexroth AG, Germany

The digital evolution of mobile off-highway machinery demands robust cybersecurity. With the Cyber Resilience Act (CRA) becoming mandatory by December 2027, manufacturers face critical compliance challenges impacting EU market access and business continuity. This presentation will unpack the CRA's requirements, highlighting the urgent need for a holistic, lifecycle-based cybersecurity approach. Discover how integrating security, combined with proven engineering processes and ecosystems like Bosch Rexroth's BODAS, transforms compliance into a strategic advantage, building trust and futureproofing operations in a connected world.

11:00 - 11:30 - Break



# Autonomous Part 1

## MODERATOR:

**Alexander Holler**, general manager – electronics division, Inter Control, Germany

### 11:30 - Key technologies for off-highway autonomy

**Dr Thomas Pohlmann**, senior strategy advisor, InMach Intelligente Maschinen GmbH, Germany

Autonomy has enormous market potential for future off-highway vehicles worldwide. While many automation solutions for autonomous operation are already available in individual applications, such as in construction machinery, mining, material handling, etc, autonomy is taking off in global agricultural machinery industrywide. The presentation will highlight key technologies that enable the manifold introduction of and massive growth in agriculture and their likely impact on other off-highway machinery with solid reference to iVT Expo 2026 exhibitors.

### 11:50 - Middleware-centric approach for the development of autonomy of software-defined off-highway machines

**Peter Ngure**, product manager, dSPACE, Germany

The transition toward software-defined architectures is reshaping how autonomy is developed for off-highway machines, where diverse sensor configurations, harsh environments and hardware variability introduce significant complexity. Developing reliable perception and autonomy software requires deterministic data handling, modular integration and reproducible testing. These capabilities cannot be achieved through fragmented

toolchains or hardware-dependent workflows. A middleware-centric approach addresses these challenges by enabling real-time multisensor synchronization, consistent and scalable data pipelines and hardware abstraction. This foundation accelerates prototyping, improves software reliability and ensures a clear path to production. As off-highway platforms evolve toward software-defined machines, middleware becomes the key enabler for efficient and robust autonomy.

### 12:10 - Enabling autonomous innovation with rugged high-speed interconnect solutions

**Miles Schöckel**, senior product manager, ITT Cannon GmbH, Germany

As autonomous capabilities advance across agriculture, construction and mining equipment, machines depend on fast, reliable data to support sensing, navigation and control. High speed connectivity is essential, but speed alone isn't enough. These vehicles operate in demanding conditions where connectors face extreme temperatures, vibration, dust and moisture. In such environments, ruggedized sealed interconnect solutions are critical to protecting system integrity and preventing failures. This presentation explores how next-generation interconnects can ensure uptime, safety and consistent operation. Attendees will learn how connector design directly impacts autonomy, and why connectivity is becoming a foundational requirement for the heavy equipment ecosystem.

12:30 - 13:30 - Lunch

# Electric & Hybrid Powertrain Part 2

## MODERATOR:

**Dr Steffen Mutschler**, director of sales and product management for electrification of mobile machinery, Bosch Rexroth, Germany

### 13:30 - Voluntary market standards for electric construction equipment

**Tobias Stöcker**, zero emission advisor, Zen in transition, Netherlands

Leading off-highway vehicle manufacturers have joined forces with ENI (Emissieloos Netwerk Infra) and ElaadNL to discuss open market standards for zero-emission (ZE) construction machinery. In this OEM round table the companies are working together pre-competitively to articulate standards on various design aspects. That will enable easier adaptation by end users in the European markets. Komatsu, Volvo CE, Liebherr and VDL ETS are the initial members of the round table and have published their first recommendations relating to physical aspects of the machine and the standard charging protocol. Recommendations are published here:

<https://www.emissieloosnetwerkinfra.nl/english/oem-roundtable> and European OEMs are invited to follow them.

### 13:50 - Poclair's eWheel: How mechatronics integration eases the adoption of electrification

**Philippe Reynolds**, director electric products and solutions, Poclair Hydraulics, France

Electrifying mobile equipment is no longer a distant goal – it's a necessity. Yet complexity often slows adoption. Market-driven solutions can help simplify the development and production of electric machines. Modular mechatronic architectures bring together high-performance power transmission and seamless electrical integration, enabling faster time-to-market and reliable machine compliance. A real-world example demonstrates the advantages of an all-in-one electric wheel hub: a compact, integrated assembly that combines inverter, electric motor and gearbox while meeting the mounting and fit requirements of today's compact equipment.



### 14:10 - Electrifying hydraulics: Improving efficiency and productivity in the off-highway sector

**Markus Plassmann**, head of electrified hydraulics, Danfoss Power Solutions, Germany

The off-highway sector has rapidly moved from simple drop-in electrification to fully optimized electric drivetrains and integrated system architectures. Electrification now improves total cost of ownership, productivity, operator comfort and controllability,

and reduces noise and emissions. The next major step is tighter integration of hydraulic and electric subsystems. With intelligent software and advanced e-pumps, new levels of efficiency and performance are possible. This presentation covers Danfoss's latest e-pump developments, emerging e-hydraulic architectures and insights from real machine conversions at the Danfoss Application Development Center, where new concepts are validated through real-world testing.

## Thermal Management

### MODERATOR:

**Marco Gubitosa**, engineering director, Industrie Saleri Italo SpA, Italy

### 14:30 - Pushing back the thermal limits of electrification in off-highway applications

**Olivier Dubois**, director of sales and strategy, Calogy Solutions, Canada

Heat is a roadblock in achieving the power, safety and compactness required for demanding off-highway applications. Motors, power electronics and batteries are all limited by heat. Air cooling is simple to implement and robust but limited in performance. On the other hand, liquid cooling, adopted in the automotive sector, is performant but its limited robustness and complexity prevent its adoption in industrial equipment. This session will describe the thermal challenges in electrification, compare the leading thermal management solutions and propose novel strategies that deliver the performance of liquid cooling but with the simplicity of air cooling.

### 14:50 - Beyond batteries: Why thermal management determines the success of electrification

**Daniel Jackson**, business development director, Calatherm Limited, UK

As off-highway vehicles transition to electrified powertrains, thermal management is emerging as a critical enabler of performance, reliability and total cost of ownership. This presentation explores why batteries alone do not define

success, examining the thermal challenges posed by real-world off-highway duty cycles, harsh operating environments and constrained packaging. It highlights the need to manage heat across batteries, power electronics, electric motors and operator cabins as an integrated system. Drawing on practical project experience, the presentation discusses common pitfalls, design trade-offs and the value of bespoke, application-led thermal solutions in supporting safe, efficient and scalable electrification.

### 15:10 - Holistic thermomanagement for electric or hybrid off-highway vehicles

**Yahia Khanoucha**, project manager and engineer, Eberspächer Climate Control Systems International GmbH, Germany

The presentation shows the concept of a holistic TMS with one system for battery, cabin and electronics. This saves space, weight and cost, but the system itself gets more complex. This can be shown with a customer or as a use case – with tasks, application, implementation, testing and explaining how the system works. Further ideas are welcome.

### 15:30 - 16:00 - Break



# ivT EXPO

INDUSTRIAL VEHICLE TECHNOLOGY

JUNE 9 & 10, 2027

KÖLN MESSE, GERMANY

# Showcasing the latest advances in industrial vehicle technology

**BOOK YOUR EXHIBITION SPACE FOR  
USA 2026 AND EUROPE 2027**



**VISIT BOOTH 5060  
TO BOOK NOW!**



[www.ivtexpo.com](http://www.ivtexpo.com)

## Cross-Sector Panel

### 16:00 - Panel discussion: Engineering for extremes – technology challenges for off-highway vehicles in harsh environments

**Ahcène Nedjimi**, global electromobility system architect, Volvo Construction Equipment, France

**Deepak Shekhar**, global e-mobility solutions product manager, Scania, Sweden

**Joost Hoogduin**, vehicle integration leader, Hyster-Yale Materials Handling, Netherlands

**Dr Stefano Fiorati**, director – powertrain innovation, CNH Italia, Italy

**Moderator: Pierre Delatte**, CTO, Cissoïd, Belgium

In this cross-sector panel, leading OEMs will explore the technical challenges shaping the next generation of machines

and systems operating in harsh conditions.

#### The audience will learn:

- How OEMs are addressing key technology pain points: electrification, durability, thermal management, automation and system integration for harsh-environment applications
- Lessons learned: comparing and contrasting approaches and collaborating with all stakeholders
- Managing the expectations of the customer
- Use cases: emerging architectures and technology strategies for the coming decade – across construction, agriculture, mining and material handling

DAY 2 THURSDAY, JUNE 11

## Electric & Hybrid Powertrain Part 3

### MODERATOR:

**Mohideen Farouk**, director, engineering services off-highway and commercial vehicles, L&T Technology Services, Germany

### 09:30 - Unlocking the full value of batteries: Vehicle-to-X for mobile machinery

**Philipp Tielmann**, director sales, business development and product management, Jungheinrich Powertrain Solutions, Jungheinrich Norderstedt AG & Co. KG, Germany

Electric mobile machines are gaining traction, but high battery costs limit adoption. V2X concepts unlock additional value by using the traction battery beyond propulsion. The presentation explains V2L, V2H and V2G, outlining standards and off-highway challenges. V2L shows strong demand, enabling machines to serve as mobile power sources, i.e. by replacing diesel generators. Additional potential lies in building support and grid-related applications. A bidirectional 11kW onboard charger developed by Jungheinrich and IEB serves as a key enabling technology. Overall, V2X functionalities significantly increase the utility and economic value of electric mobile machines.

### 09:50 - Interconnecting HVDC systems: Architectures, challenges and real-world applications

**Dr Michael P Schmitt**, CEO, Kinell GmbH, Germany

This presentation examines the practical applications of high-voltage DC (HVDC) coupling between two independent HV systems to enhance the functionality and range of electric mobile machines. It outlines the mechanical, electrical and system-level challenges that arise when interconnecting previously isolated HVDC systems and highlights the essential system functions required to ensure safe coupling, protection and controlled operation. A practical implementation of a safe, connectable HVDC link is presented, based on the AEF ISO

23316 2 high-power interface. Finally, a 4x4 battery electric AgroTruck is showcased, demonstrating HVDC coupling with external swappable batteries for scalable range extension.

### 10:10 - Powering zero-emission urban construction with mobile charging

**Ed Lea**, founder, Charge Fairy, UK

**Nikolaj Birkerod**, CEO and owner, HG Machines, Denmark

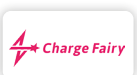
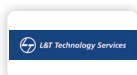
Charge Fairy has been charging compact electric plant in London for the past 12 months. Operations have grown from an initial single proof-of-concept project to cover three of London's biggest boroughs, dozens of sites and machines from multiple OEMs. Ed Lea will share how electric machines are being used successfully on sites with zero power, saving thousands of liters of diesel and helping municipalities deliver on their net zero goals.

### 10:30 - Saving battery costs by optimizing the inverter's control strategy

**Michael Seeger**, key account manager/senior sales manager, AVL SET GmbH, Germany

The inverter test system is the right equipment to optimize the inverter's control strategy. As the inverter influences the other components in the powertrain, an optimized control strategy leads to an increased total efficiency. Saving battery costs or extending the driving range is only one of many advantages resulting from a well-optimized inverter operating strategy. Moreover, it is always a question of the overall drivetrain efficiency and the single components' interplay to offer a cost-optimized vehicle to the final customer.

### 10:50 - 11:20 - Break



# Hydrogen & Alternative Fuels

## MODERATOR:

**Mohideen Farouk**, director, engineering services off-highway and commercial vehicles, L&T Technology Services, Germany

### 11:20 - Enabling H<sub>2</sub> storage for decarbonized hydrogen-based powertrains

**Roland Barth**, head of commercial and off-highway vehicles, ITK Engineering, Germany

**Stefan Ostertag**, vice president, Robert Bosch, Germany

Hydrogen is a key lever to decarbonize the industrial vehicle/off-highway domain. However, safe integration of H<sub>2</sub> tank systems into mobile applications is challenging. This presentation introduces the key components and a systematic, domain-agnostic safety engineering approach for hydrogen storage

across H<sub>2</sub> ICE and fuel-cell powertrains. It combines item definition, hazard and risk analysis, as well as functional and product safety while considering relevant regulatory aspects. Examples show how digital twins, diagnostics and data-driven services support leakage detection, safe refueling and regulatory compliance for industrial/off-road vehicles, reducing development effort and enabling safe H<sub>2</sub> adoption.

### 11:40 - The next generation of 'hydrogen zero-emission' heavy-duty machines won't be built by traditional OEMs. It'll be built through partnerships

**Neha Roy**, innovation lead, Hyster-Yale Group, Netherlands  
**Joost Hoogduin**, vehicle integration leader, Hyster-Yale Materials Handling, Netherlands

# SDV, Digitalization & HMI Part 2

## MODERATOR:

**Sven Heller**, CEO, Create Next GmbH, Germany

### 12:00 - Stop designing screens. Start designing HMIs

**Lutz Cordes**, senior designer and innovation consultant, Gofore GmbH, Germany

In many work environments, HMI is still treated as a screen problem. But operators don't interact with pixels – they interact with space, posture, reach, light, vibration and context. This presentation challenges the display-centric mindset and examines HMI as a holistic task: it integrates ergonomics, industrial design and interface architecture into a unified user experience. Using examples from machines and vehicle cabins, it shows how thinking beyond the screen improves usability, safety and efficiency – and why true human-centered design begins long before the user interface is designed.

### 12:20 - Ultra-low-latency teleoperation: Redefining remote control for industrial machines

**Baptiste Auger**, product manager, efa France, France

In an era where autonomy and remote management are transforming the off-highway industry, efa, a leading French integrator, introduces a game-changing teleoperation solution. This innovation achieves an industry-leading latency of just 65ms, utilizing a robust hybrid 5G/satellite connectivity framework. This presentation will explore how such high responsiveness enables the control of heavy machinery from any distance, ensuring both productivity and operator safety. Furthermore, it will discuss the strategic importance of this technology in light of the Machinery Regulation (2023/1230). As real-time monitoring becomes mandatory for autonomous vehicles by 2027, efa provides the essential technological bridge for remote industrial operations.

### 12:40 - Before they think: Building trust in milliseconds, value for years

**Sven Heller**, CEO, Create Next GmbH, Germany

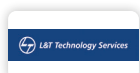
Don't just sell more and more features. Start building trust. Operators don't always make purely rational decisions. They often act on instinct. That gut feeling? It can be shaped. This presentation shows how user-oriented HMI builds trust – which generates added business value. Because when specs are equal, the better feeling wins. Learn how to create genuine preference through targeted HMI design – through what your machines do and how they feel.

### 13:00 - Multi-fidelity machine digital twin for interconnected CAE to control workflow

**Gaétan Bouzard**, heavy equipment industry lead, Siemens DISW, France

Heavy equipment manufacturers are transitioning to software-defined machines (SDM) to enable autonomous and ADAS functions. This shift exposes integration gaps between chassis dynamics, braking, powertrain electrification and control software, increasing validation risk and development cost. This presentation presents a unified, multi-domain engineering workflow that connects system simulation, 3D multibody dynamics and control development within a scalable (or multi-fidelity) machine digital twin. The approach supports multi-attribute trade-offs, multi-fidelity modeling and continuous XIL verification using a common plant model. The result is reduced cycle time, improved cross-domain traceability and higher pre-hardware confidence for autonomous heavy equipment.

### 13:20 - 14:20 - Lunch



# Autonomous Part 2

### MODERATOR:

**Stefan Lang**, director of market strategy and solutions, Sensor-Technik Wiedemann, Germany

### 14:20 - No qualified drivers? A holistic approach to autonomy and teleoperation

**Dr Christoph Müller**, CEO, MobileTronics GmbH, Germany

The presentation covers a generic technology for modern operation of any kind of mobile machine. Commercial use of driverless equipment needs more than a fully automated machine, such as: handling work orders, maps and other data; human supervision of the operation; teleoperation of different machine types from a remote workplace and very low data and video latency; and availability of data for QA and remote service. The paper shows how these demands can be efficiently implemented in commercial applications. Two different industry applications with earthmoving machines and airport ground support equipment are currently underway.

### 14:40 - Safety you generate yourself – Husco's unique fail-functional SbW system

**Simon Yardley**, director of business development and corporate marketing, Husco, UK

**Dave Joyce**, engineering director, Husco, UK

Husco's Steer-by-Wire (SbW) innovation, GenSteer, establishes a new foundation for advanced control and automation in mobile machinery. This presentation explores how GenSteer is enabling the next generation of high-performance, off-highway wheeled equipment. Unlike traditional approaches that rely on duplicated hardware and software, GenSteer achieves full fail-functional safety through smart, integrated system design – delivering redundancy without replication. The presentation walks through the details of the world's first SbW system with safety that users can configure themselves.

### 15:00 - System-level modeling and performance evaluation of electrohydraulic systems

**David Ilioaä**, sales engineer, Famic Technologies, Germany

As electrification and automation continue to reshape off-highway machinery, system-level simulation is becoming essential for evaluating new concepts. This presentation shows how different modeling approaches can be used to compare conventional hydraulic functions with electrohydraulic alternatives. With practical examples built in Automation Studio, the session highlights how engineers can assess system behavior, identify efficiency gains, reduce energy consumption and explore applications such as battery integration, energy recovery and autonomous machine functions.

### 15:20 - Automating mining trucks through retrofitting – a case study

**Gireesh Krishnan**, director, 3S Knowledge Ltd, UK

The session will focus on the technology development of autonomous driving systems for off-highway trucks (e.g. for the mining industry). 3SK led the design and development of a driverless off-highway vehicle, adding a new technology kit into existing legacy vehicles. This kit enabled vehicles to be self-driven and teleoperated in a safe and reliable way. Key topics will include the systems engineering approach to the design and development of autonomous mining trucks; application of functional safety standards (IEC 61508, ISO 19014); and the application of SOTIF (Safety of the intended functionality) based on ISO 21448 for the autonomous system.

### 15:40 - 16:10 - Break

### 16:10 - Panel discussion: Nordic know-how – shaping the next era of intelligent work machines

**Mikko Valtee**, strategic research and innovation manager, Sandvik, Finland

**Johannes Hyrynén**, research manager – transportation technologies, VTT Technical Research Center of Finland, Finland

**Kalle Raita**, founder, Digisalix, Finland

**Moderator: Dr Jose Luis Peralta**, CTO, GIM Robotics, Finland

This session examines how heavy machinery, robotics, autonomy and sustainability come together as a single system. Our expert panel explores how the Nordic approach integrates these layers to deliver scalable, real-world intelligence in the world's toughest operating environments.

#### The audience will learn:

- How autonomous systems are transitioning from research labs to commercial deployments
- Lessons from unique Nordic collaboration – academia, OEMs and startup ecosystems
- Advances in off-road perception, navigation and safety frameworks for extreme conditions
- Electrification and sustainability as core design pillars for next-gen heavy machinery
- OEM perspectives on scaling autonomy for construction, mining, forestry and mobility

\*This program may be subject to change



# ivT EXPO

OFF-HIGHWAY VEHICLE TECHNOLOGY  
AUGUST 19 & 20, 2026  
CHICAGO, USA

Discover the  
future of  
off-highway  
vehicle  
innovation

2,000+  
VISITORS

EARLY-BIRD CONFERENCE  
PASS - BOOK NOW!



REGISTER NOW FOR  
YOUR EXPO PASS!



160+

SOLUTION PROVIDERS

VISIT BOOTH 5060 TO  
BOOK YOUR BOOTH



[www.ivtexpo-usa.com](http://www.ivtexpo-usa.com)

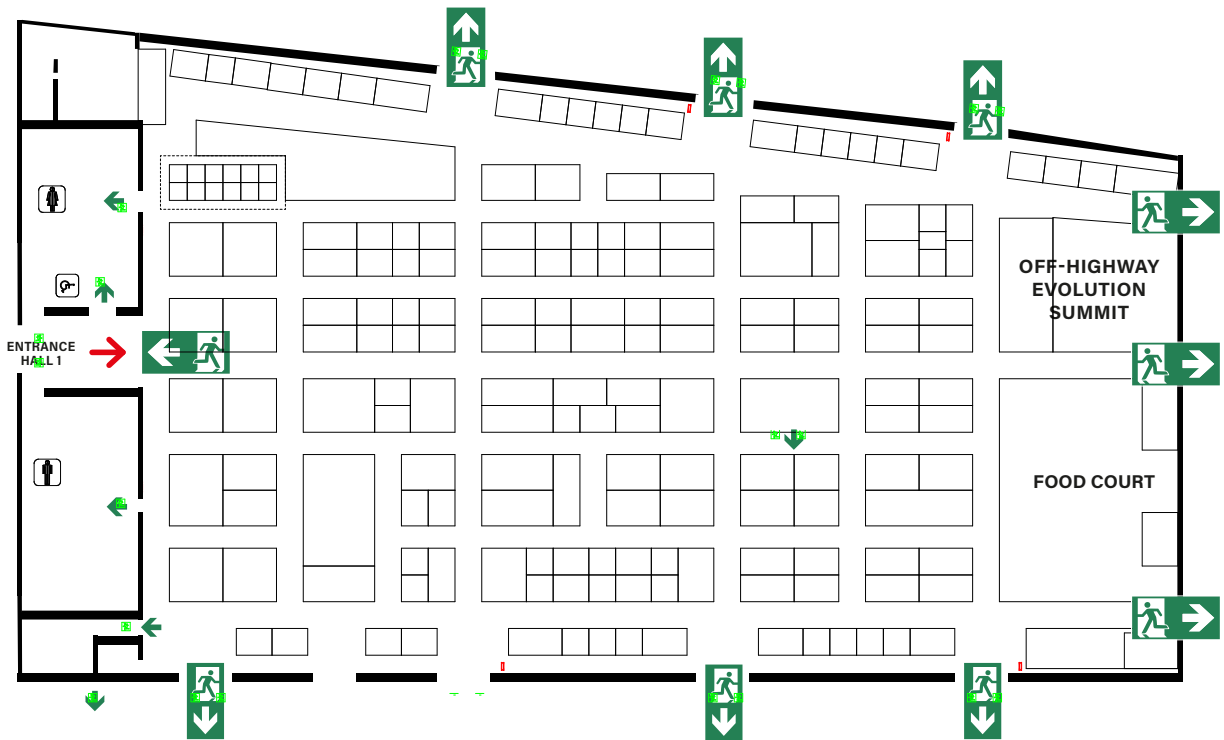
# EMERGENCY EVACUATION PROCEDURE

## KÖLN MESSE

### HALL 1

In the event of a fire or other emergency evacuation, an overhead announcement will be made in English and German. Please leave the building through the nearest indicated usable exit and follow the signage to the nearest assembly point. Once outside the Köln Messe, staff will direct guests further, including advising when it is possible to return to the building.

To report any emergency, including fire, accident or theft, please speak to a member of the organizing team or Köln Messe staff as quickly as possible, or dial: +49 221 821 3333 or 3333 from an internal phone.



# Thanks to our sponsors

**iVT EXPO**  
INDUSTRIAL VEHICLE TECHNOLOGY

# SPONSORS

**DURAKOOL**

 **intercel**  
ENDLESS ENERGY

**BUCHER**  
hydraulics

**DIGISALIX**

**ETAS**

 **INTER  
CONTROL**

**itk**  
ENGINEERING



**JOHN DEERE**

## MEDIA PARTNERS



**CHARGED**  
ELECTRIC VEHICLES MAGAZINE

**AUTOMOTIVE  
POWERTRAIN**  
technology international

 **FORKLIFT  
ACTION**  
Materials Handling Platform

**iVT**  
INTERNATIONAL  
INDUSTRIAL VEHICLE TECHNOLOGY

**ADAS &  
Autonomous  
Vehicle**  
INTERNATIONAL

[www.ivtexpo.com](http://www.ivtexpo.com) #iVTExpo

# THERE ARE NO BAD CONDITIONS

GORE® Protective Vents  
for Heavy-Duty Equipment

Experience Reliability.

*“Now tested  
for ruggedized  
conditions”*

Discover more at our  
booth #5080



*Together, improving life*

